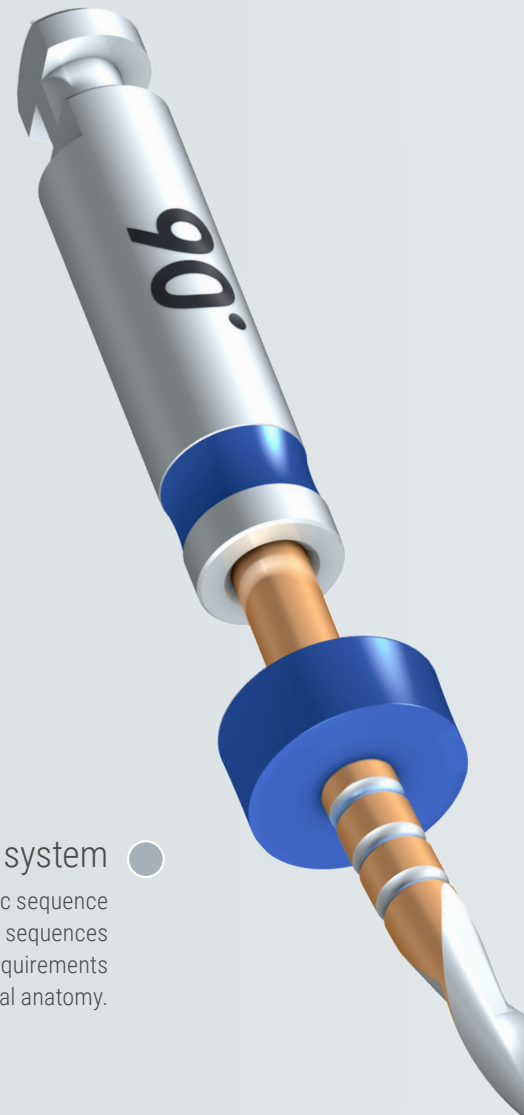




FQ.
The easy way to a
successful endo.





Versatile system ●

Clearly laid out basic sequence but individually adapted file sequences are also possible to suit the requirements of the canal anatomy.

Brasseler®, Komet®, Art2®, CeraBur®, CeraCut®, CeraDrill®, CeraPost®, DC1®, DIAO®, FastFile®, F360®, F6 Sky Taper®, H4MC®, KometBioSeal®, OccluShaper®, OptiPost®, PolyBur®, PrepMarker®, Procodile®, Procodile Q® and SHAX® are registered trademarks of Gebr. Brasseler GmbH & Co. KG.

ReFlex® and EndoPilot® are registered trademarks of Schlumbohm GmbH & Co. KG

Some of the products and designations mentioned in the text are trademarked, patented or copyrighted. The absence of a special reference or the sign ® should not be interpreted as the absence of legal protection.

This publication is copyrighted. All rights, also with regard to translation, reprint and reproduction (also in the form of extracts) are reserved. No part of this publication may be reproduced or reprocessed using electronic systems in any form or by any means (photocopying, microfilm or other methods) without the written permission of the editor.

Colours and products are subject to alterations. Printing errors excepted.

As at February 2025

Heat-treated nickel-titanium** ●

Improved access to the root canals and reduced risk of undesirable zipping and ledges.

** Except FQ Glider

FQ. efficient, flexible, reliable.

Every endo is unique. And so is FQ: innovative system to make the treatment easier, more efficient and safer. It is an impressive all-in-one-solution that transfers Komet's experience into a new generation of files. This new rotary nickel-titanium file system allows for an effective and minimally invasive treatment of difficult root-canals. The innovative variably tapered file core has a double-S cross section and offers maximal flexibility and an excellent cutting performance. The pre-bendable files cut easily and grant a pleasant and safe working experience.

Heat-treated nickel-titanium.

The higher resistance to cyclic fatigue minimizes the risk of file fracture. Better access to the root canals and lower risk of zipping and ledges, as the file is pre-bendable and very flexible.

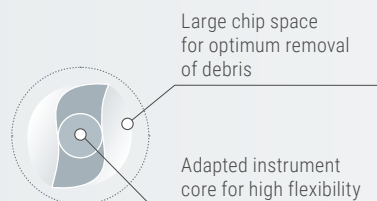
Double-S cross section.

Efficient treatment thanks to the excellent cutting performance. The narrow core of the file allows for optimal flexibility.

Variably tapered file core*

The variably tapered file core enlarges the chip space. Infected tissue is transported out of the canal more efficiently and the duration of the treatment is shortened.

Thanks to the heat-treated material, the variably tapered file core is very flexible. The file follows the anatomy even in very curved canals, making the treatment safer.



● Unique - Double-S cross-section and a variably tapered file core*

Infected tissue is evacuated from the canal even more efficiently, thus optimizing the treatment time.

* for instruments with taper .06

FQ. Step-by-Step.

Concise system. Clearly laid out basic sequence (Step 1-3) containing a small number of well-matched instruments to save time during root canal treatments.

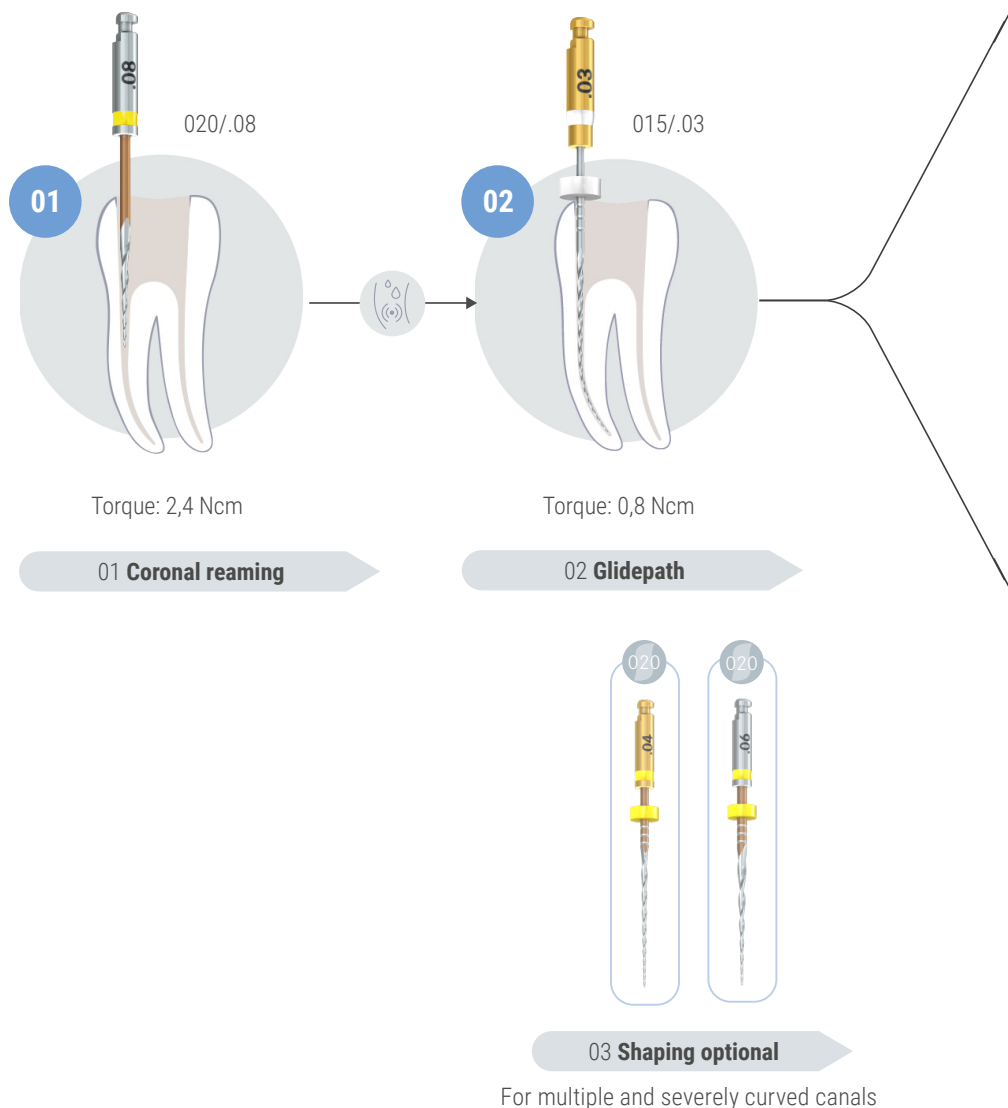
However, the comprehensive, versatile portfolio also allows the compilation of individually adapted file sequences to suit the requirements of the canal anatomy.

[01] Exposure of the canal entrance with the FQ Opener.

[02] Probing with manual files and mechanical creation of a glide path with the FQ Glider.

[03] Preparation of the canal with the FQ Shaping files. Depending on the requirements, choose your sequence between Taper .04 and Taper .06

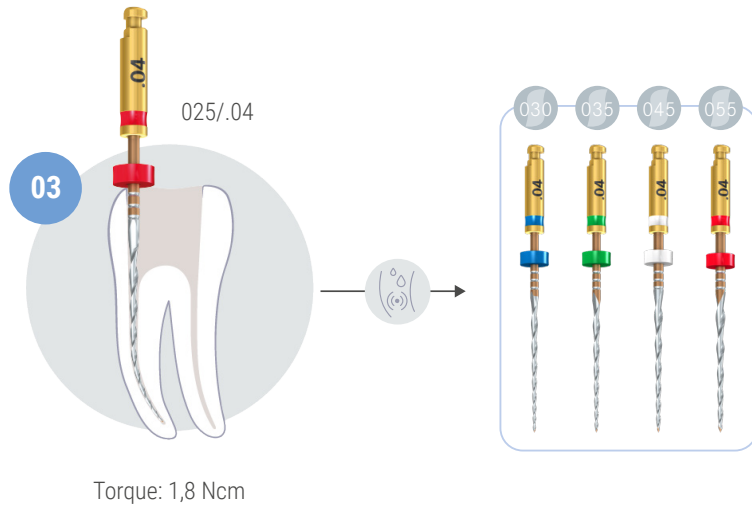
[04] Finishing up to the desired preparation size with the FQ Finishing files.



For multiple and severely curved canals

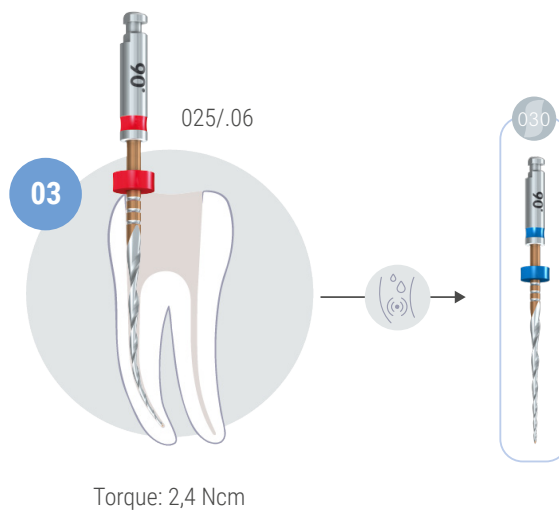
Taper .04

- Maximal preservation of tooth structure and respect for the natural root canal morphology
- Ideally suited for Single-cone obturation



Taper .06

- Optimal preparation for an efficient cleaning of the root canal
- Most flexibility when it comes to choosing the obturation method



03 Shaping

04 Finishing



FQ. System.

FQ Opener

- Shapes the canal entry to create an ideal and straight access.
- Access to narrow canals, especially MB2
- Screws in easily to access the entry of the canal



● **FQ08L19.204.020**

FQ Glider

- Effective and optimal transition to the shaping files
- Creates a functional and repeatable glide path
- Compared to purely manual glide path creation, the user saves valuable time



○ **FQ03L25.204.015**

Can be used in all common endo motors with the following settings:

	Torque [Ncm]
FQ Opener	2,4
FQ Glider	0,8
FQ Taper .04 (020 - 035)	1,8
FQ Taper .06 (020 - 030) FQ Taper .04 (045 - 055)	2,4

Speed [rpm]

300 (max. 500)

FQ Files | taper .04

- Minimally-invasive treatment concept
- Maximal preservation of tooth structure and preservation of the natural root canal morphology
- Ideally suited for single-cone obturation



● **FQ04L25.204.020**



● **FQ04L25.204.025**



● **FQ04L25.204.030**



● **FQ04L25.204.035**



○ **FQ04L25.204.045**



● **FQ04L25.204.055**

FQ Files | taper .06

- Optimal preparation for an efficient cleaning of the root canal
- Most flexibility when it comes to choosing the obturation method
- Ideally suited for all types of obturation; including warm-vertical obturation
- Particularly efficient for retreatments



● **FQ06L25.204.020**



● **FQ06L25.204.025**



● **FQ06L25.204.030**

Available in the lengths 21 mm, 25 mm and 31 mm (6 files in each blister pack)

FQ Assortment SORT207

- **FQ08L19.204.020**
- **FQ03L25.204.015**
- **FQ04L25.204.020**
- **FQ04L25.204.025**
- **FQ04L25.204.030**
- **FQ04L25.204.035**

Available in the lengths 25 mm (6 files in each blister pack)



FQ. Motors.

EnGo

- Wireless
- Individual Settings
- Sophisticated Ergonomics
- Optimum View
- Integrated Apex Locator
- Brushless Motor

EnGO13 Endo-Motor



EnDrive

- Endodontic motor with integrated apex locator
- Battery-operated, cordless handpiece
- Battery-powered main unit
- Can be used horizontally and vertically
- Updates via WLAN
- Very small contra-angle head
- Insulated contra-angle
- LED ring for visual feedback of the torque value
- Preparation with rotary or reciprocating files
- Holder for handpiece with magnetic function
- 7-inch colour touch display
- Auto-stop and auto-reverse function



ED01 EnDrive



FQ. Obturation.

The Obturation. Step by Step.

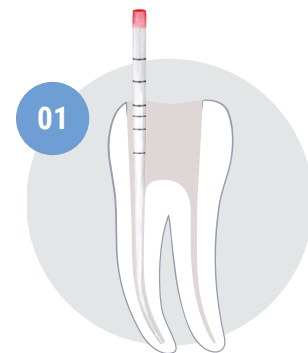
- [01] After the final rinse, the canal system is dried with paper points of congruent shape and the gutta-percha is adapted.
- [02] The root canal system is filled with KometBioSeal through the fine tip of an application syringe.
- [03] The guttapercha point is inserted with pumping movements and shortened to the correct working length, for example with the EndoPilot Downpack handpiece.

Komet BioSeal

is a bioceramic sealer that meets all the requirements placed on a modern root filling material.

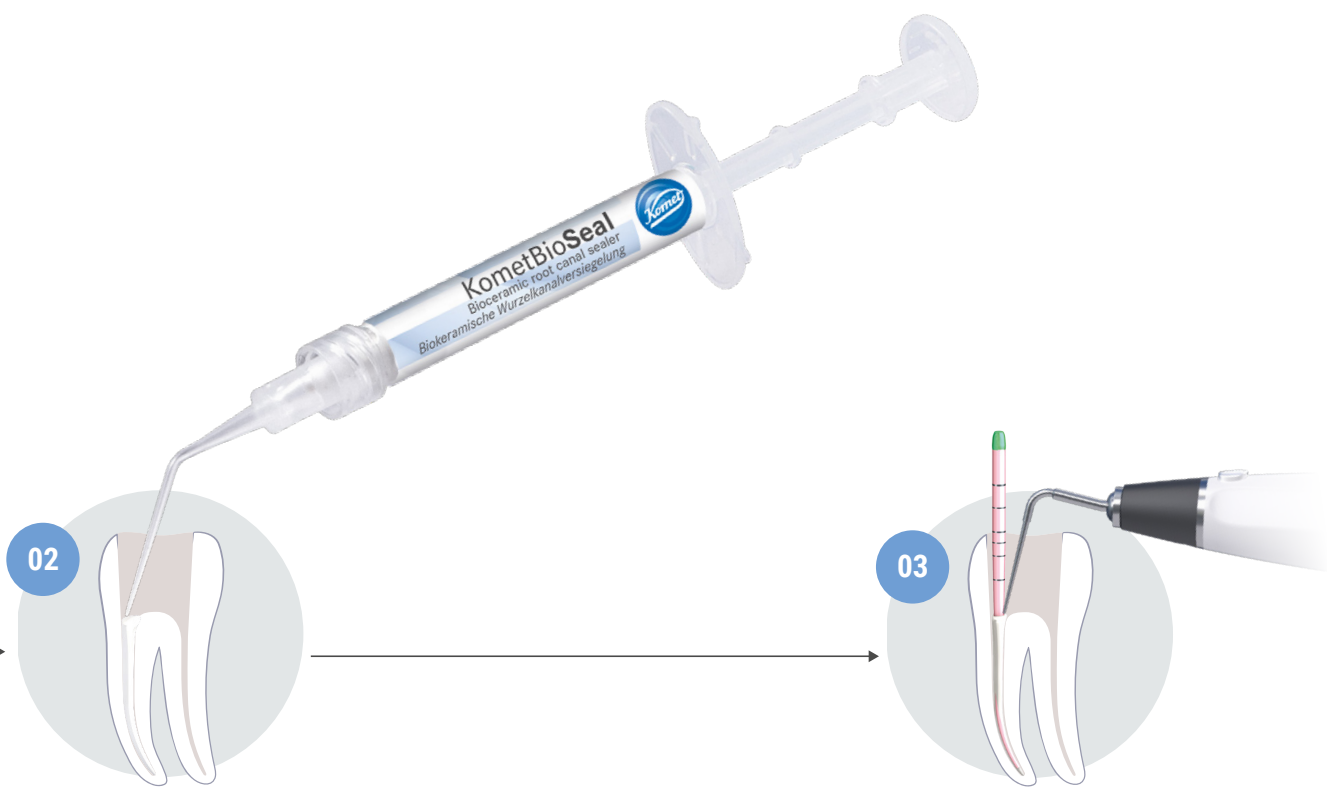
The clinical advantages at a glance:

- excellent biocompatibility
- perfect adhesion and easy application
- antibacterial effect
- outstanding radiopacity



FQ Paper points
adapted to the preparation with the FQ system
Color coded and graded

- PPFQ04.000.020
- PPFQ04.000.025
- PPFQ04.000.030
- PPFQ04.000.035
- PPFQ04.000.045
- PPFQ04.000.055
- PPFQ06.000.020
- PPFQ06.000.025
- PPFQ06.000.030



BCS1 Komet BioSeal
Bioceramic root filling material

FQ Gutta-percha points
adapted to the preparation with the FQ system
Color coded, graded and radiopaque



- GPFQ04.000.020
- GPFQ04.000.025
- GPFQ04.000.030
- GPFQ04.000.035
- GPFQ04.000.045
- GPFQ04.000.055
- GPFQ06.000.020
- GPFQ06.000.025
- GPFQ06.000.030

FQ. Clinical Case.



Dr. David Christofzik

Specialist for endodontics and traumatology, Kiel/Germany

"I like working with FQ.

For me, the system provides the complete solution for a safe endo. At the same time, a clear basic sequence helps to save time during preparation and provides a fast learning curve for every user."



Rafael Michiels

Specialist for endodontics Hasselt/Belgium

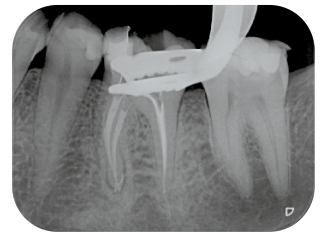
"FQ allows general practitioners to proceed with a great deal more security and confidence, whereas the high versatility of the instruments enables specialists to respond individually to complicated canal anatomies, as shown in the patient case."



Diagnostic X-Ray



Masterpoint



Filling



Diagnostic X-Ray



Masterpoint



Filling

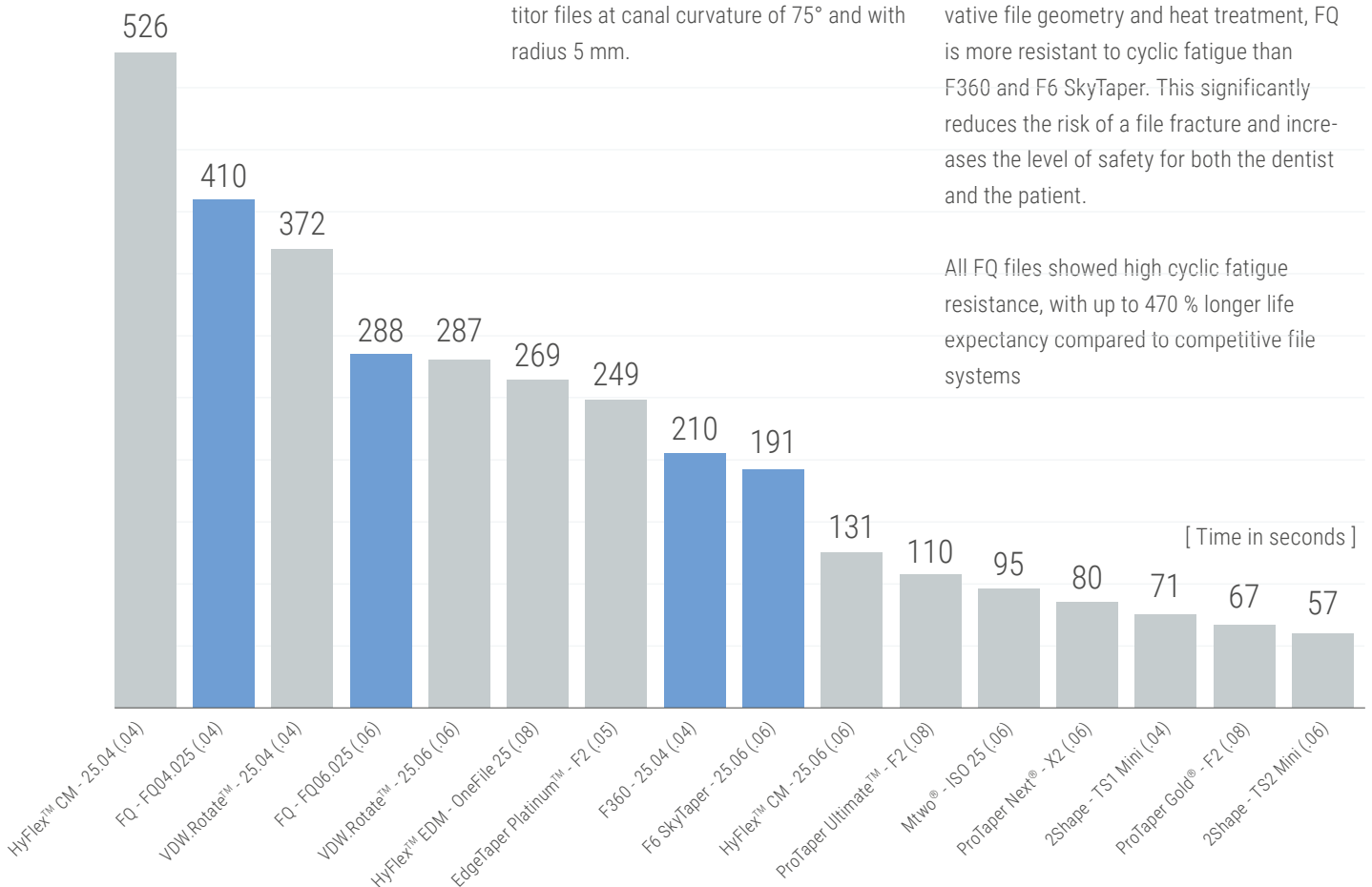


FQ. Cyclic Fatigue Resistance*.

Cyclic fatigue resistance of FQ and competitor files at canal curvature of 75° and with radius 5 mm.

Thanks to a number of features – like innovative file geometry and heat treatment, FQ is more resistant to cyclic fatigue than F360 and F6 SkyTaper. This significantly reduces the risk of a file fracture and increases the level of safety for both the dentist and the patient.

All FQ files showed high cyclic fatigue resistance, with up to 470 % longer life expectancy compared to competitive file systems



*Based on in-house test. Supporting data is available

The following systems are not registered trademarks of Gebr. Brasseler GmbH & Co. KG.

VDW.Rotate™ - Is a trademark of DENTSPLY SIRONA Inc.
 ProTaper Ultimate™ - Is a trademark of DENTSPLY SIRONA Inc.
 ProTaper Next® - Is a trademark of DENTSPLY SIRONA Inc.
 ProTaper Gold® - Is a trademark of DENTSPLY SIRONA Inc.
 EdgeTaper Platinum™ - Is a trademark of Edge Endo, LLC

Mtwo® - Is a trademark of SWEDEN & MARTINA S.p.a.
 2Shape - Is a trademark of MICRO MEGA INTERNATIONAL MANUFACTURES
 HyFlex™ CM - Is a trademark of Coltene/Whaledent, Inc.
 HyFlex™ EDM - Is a trademark of Coltene/Whaledent, Inc.

Komet Dental

Gebr. Brasseler GmbH & Co. KG
Trophagener Weg 25 · 32657 Lemgo
Postfach 160, 32631 Lemgo · Germany
Telefon +49 (0) 5261 701-0
hello@kometdental.com
Contact for dealers:
export@kometdental.de

Verkauf Deutschland:

Telefon +49 (0) 5261 701-700
Telefax +49 (0) 5261 701-289
info@kometdental.de
www.kometdental.de

Export:

Telefon +49 (0) 5261 701-0
Telefax +49 (0) 5261 701-329
export@kometdental.de
www.kometdental.com

Komet Austria Handelsagentur GmbH

Hellbrunner Straße 15 · 5020 Salzburg
Telefon +43 (0) 662 829-434
Telefax +43 (0) 662 829-435
info@kometdental.at
www.kometdental.at

Komet France

18 rue · Fourcroy · 75017 Paris
Phone +33 (0) 1 43 48 89 90
info@komet.fr
www.komet.fr

Komet Italy

Via Gianbattista Morgagni 36,
37 135 Verona
Phone +39 (0) 45 11171911
info@komet.it
www.komet.it

Komet UK

Invoice and general correspondence:
27 Old Gloucester St,
Holborn, London WC1N 3AX
info@kometuk.com
www.kometuk.com