



Komet BioSeal. Ease of use and a perfect seal.



Brasseler®, Komet®, Art2®, CeraBur®, CeraCut®, CeraDrill®, CeraPost®, DC1®, DIAO®, FastFile®, F360®, F6 Sky Taper®, H4MC®, KometBioSeal®, OccluShaper®, OptiPost®, PolyBur®, PrepMarker®, Procodile®, Procodile Q® and SHAX® are registered trademarks of Gebr. Brasseler GmbH & Co. KG.

ReFlex® and EndoPilot® are registered trademarks of Schlumbohm GmbH & Co. KG

Some of the products and designations mentioned in the text are trademarked, patented or copyrighted. The absence of a special reference or the sign ® should not be interpreted as the absence of legal protection.

This publication is copyrighted. All rights, also with regard to translation, reprint and reproduction (also in the form of extracts) are reserved. No part of this publication may be reproduced or reprocessed using electronic systems in any form or by any means (photocopying, microfilm or other methods) without the written permission of the editor.

Colours and products are subject to alterations. Printing errors excepted.

As at February 2025

Komet BioSeal. Simply bioceramic.

Komet BioSeal is a new bioceramic sealer that meets all the requirements placed on a modern root filling material.

The clinical advantages at a glance:

- excellent biocompatibility
- perfect adhesion and easy application
- antibacterial effect
- outstanding radiopacity



Why bioceramic?

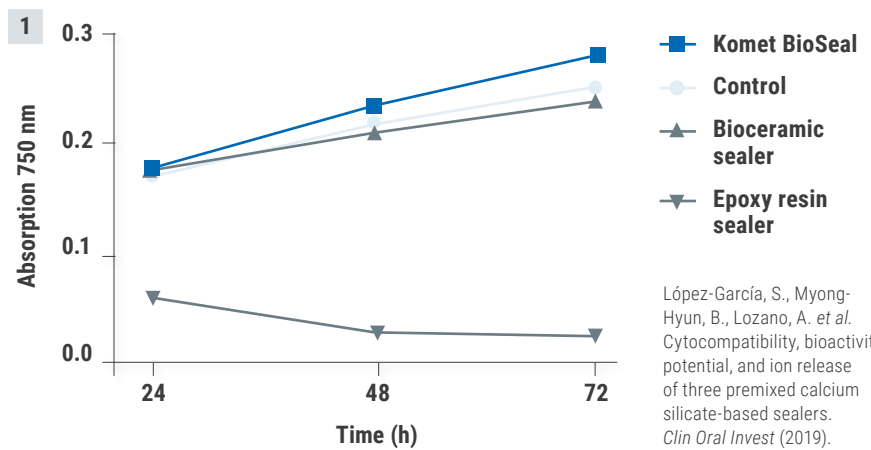
Root canal sealers mainly serve to seal voids, additional root canals and multiple foramina. What's more, endodontic sealers are intended for creating a bond between the filling material and the canal wall and for sealing off residual bacteria in the canal.

Bioceramic materials have been used in numerous other medical disciplines for many years, for example in orthopaedics. Thanks to Komet BioSeal, these materials can now also be used in endodontics.

Apart from the above applications, Komet BioSeal offers the following clinical advantages:

Bactericidal effect

Komet BioSeal owes its excellent antibacterial effect [2] to its initially high pH value during the curing phase. This means that any bacteria that may be present in the root canal are eliminated. Thanks to its consistently high pH value that remains stable for several days, the disinfecting effect of Komet BioSeal is similar to that of a calcium hydroxide insert.

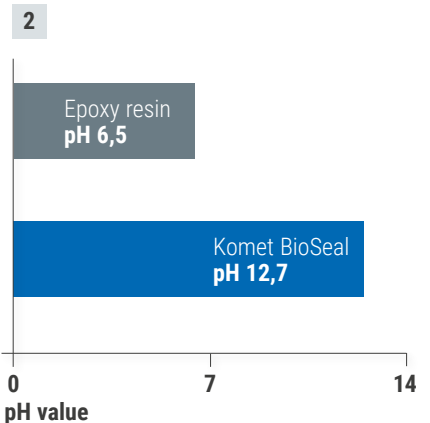


López-García, S., Myong-Hyun, B., Lozano, A. *et al.* Cytocompatibility, bioactivity potential, and ion release of three premixed calcium silicate-based sealers. *Clin Oral Invest* (2019).

[1] Degree of biocompatibility. The light absorption measures the viability of the cells.

Excellent biocompatibility

Komet BioSeal is based on calcium-silicate, which is why it is particularly biocompatible after the curing phase. In addition, it emits calcium ions [1]. These properties prevent foreign body reactions and, in turn, accelerate the healing process. In addition, cells that have settled on the sealer exhibit a positive proliferation.



[2] The clearly increased pH value during the curing phase makes the bactericidal effect of Komet-BioSeal superior to that of sealers based on epoxy resin.



Perfect adhesion and easy application

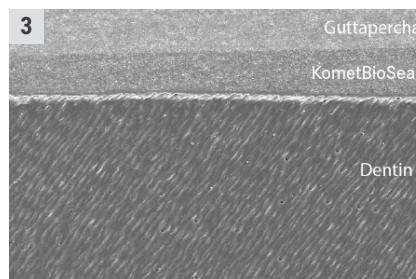
The adhesion values of Komet BioSeal are similar to those of epoxy resin sealers, which facilitates a perfect adhesive bond between the dentin, Komet BioSeal and the gutta-percha. Moreover, Komet BioSeal has hydrophilic properties, which means that, contrary to conventional sealers based on epoxy resin, Komet BioSeal uses the residual moisture in the dentinal tubules for curing. This means that, unlike epoxy resin sealers, Komet BioSeal achieves its excellent adhesion values not only under ideal conditions, but also under clinical conditions.

Backed up by studies!

- Komet BioSeal has an excellent biocompatibility
- Emits calcium ions, which promotes the formation of hydroxyapatite

Source:

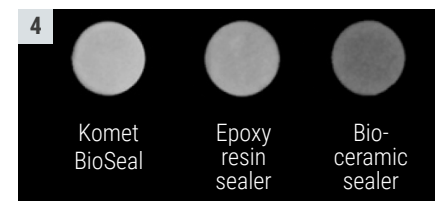
López-García, S., Myong-Hyun, B., Lozano, A. *et al.* Cytocompatibility, bioactivity potential, and ion release of three premixed calcium silicate-based sealers. *Clin Oral Invest* (2019).



[3] The material expands during the curing phase, thereby creating a gap-free bond between the dentin and the gutta-percha.

On the one hand, this makes the material both easy and safe to use, so that in combination with cold filling techniques, such as for example the single cone technique, a safe and reliable result can be achieved. On the other hand, the adhesive bond and the dimensional stability prevent an undesirable reinfection of the root canal (see scanning electron micrograph [3]).

High radiopacity



[4] The radiopacity of Komet BioSeal is similar to that of conventional sealers based on epoxy resin.

The specific composition of bioceramic sealers presents a major challenge in terms of radiopacity. Komet BioSeal owes its outstanding radiopacity [4] to its optimized formulation containing zirconium oxide particles. The radiopacity of Komet BioSeal is similar to that of epoxy based sealers and clearly superior to other bioceramic sealers, giving the user perfect control of the treatment result.

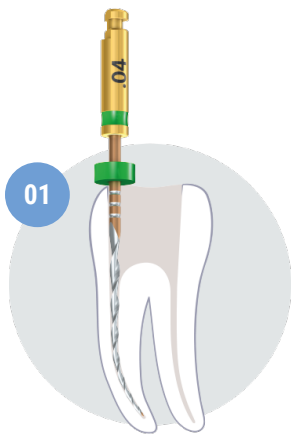


Handy hint: Discover our application video.

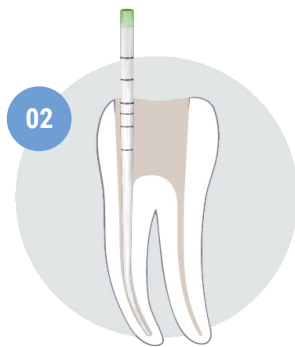
📱 Scan it!



Step by Step.



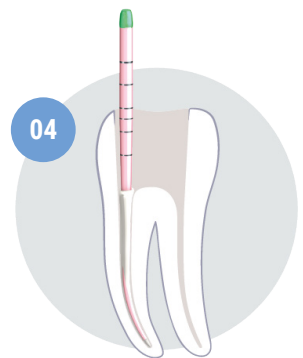
[01] Preparation of the root canal system with the user's preferred preparation system.



[02] After the final rinse, the canal system is dried with paper points of congruent shape and the gutta-percha is adapted.



[03] The root canal system is filled with Komet BioSeal through the fine tip of an application syringe.



[04] The gutta-percha point is inserted with pumping movements and shorted to the correct working length.

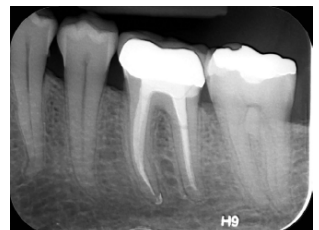


"With its combination of superior materials and excellent workmanship, plus the simplicity of use, Komet BioSeal facilitates my daily endodontic routine at the practice enormously."



Dr. David Christofzik

Specialist for endodontics and traumatology (DGET), Kiel





Komet BioSeal. The range.



BCS1 Komet BioSeal
Bioceramic root filling material



BCS1 TIPS
10 Komet BioSeal Endo Tips

Accessories for obturation:



PPF04 F360 paper points
GPF04 F360 gutta-percha points



PPFQ FQ paper points
GPFQ FQ gutta-percha points



PPPR06 Procodile paper points
GPPR06 Procodile gutta-percha points

Komet Dental

Gebr. Brasseler GmbH & Co. KG
Trophagener Weg 25 · 32657 Lemgo
Postfach 160, 32631 Lemgo · Germany
Telefon +49 (0) 5261 701-0
hello@kometdental.com
Contact for dealers:
export@kometdental.de

Verkauf Deutschland:

Telefon +49 (0) 5261 701-700
Telefax +49 (0) 5261 701-289
info@kometdental.de
www.kometdental.de

Export:

Telefon +49 (0) 5261 701-0
Telefax +49 (0) 5261 701-329
export@kometdental.de
www.kometdental.com

Komet Austria Handelsagentur GmbH

Hellbrunner Straße 15 · 5020 Salzburg
Telefon +43 (0) 662 829-434
Telefax +43 (0) 662 829-435
info@kometdental.at
www.kometdental.at

Komet France

18 rue · Fourcroy · 75017 Paris
Phone +33 (0) 1 43 48 89 90
info@komet.fr
www.komet.fr

Komet Italy

Via Gianbattista Morgagni 36,
37 135 Verona
Phone +39 (0) 45 11171911
info@komet.it
www.komet.it

Komet UK

Invoice and general correspondence:
27 Old Gloucester St,
Holborn, London WC1N 3AX
info@kometuk.com
www.kometuk.com