



Simply saves tooth structure.
The occlusal onlay.



Occlusal onlays. The innovative alternative to crowns.

The traditional approach:

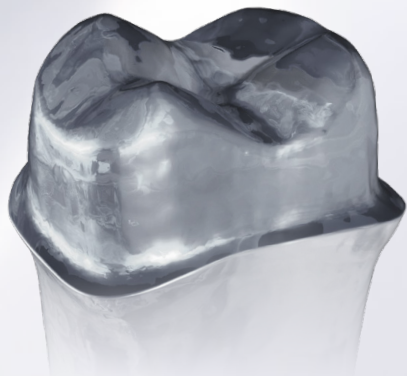
PFM crowns are the traditional restoration method for extensive defects in the hard substance of premolars and molars.

Advantages:

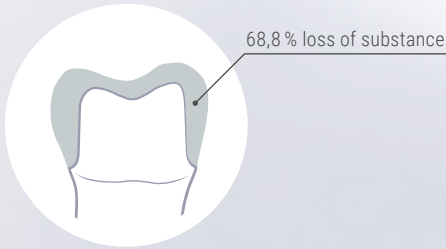
Long-established method. Durable restorations all dentists are familiar with.

Disadvantages:

The preparation causes a substantial loss of hard substance. This increases the probability of biological complications, such as pulpitis and crown margins almost reaching up to the gingival.



Traditional crown preparation of a first molar.



68,8 % loss of substance during a traditional crown preparation*.

**The minimally invasive approach:
Occlusal onlays ("Table Tops").**

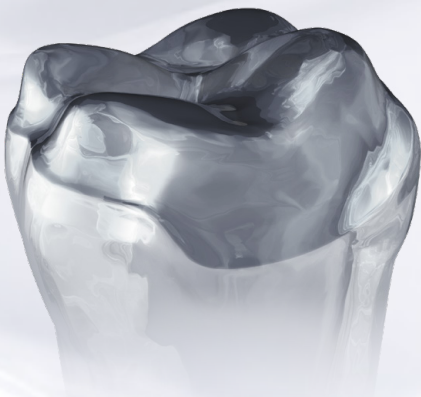
Occlusal onlays have been introduced as a new, minimally invasive alternative for the restoration of occlusal defects in the hard substance of premolars and molars.

Advantages:

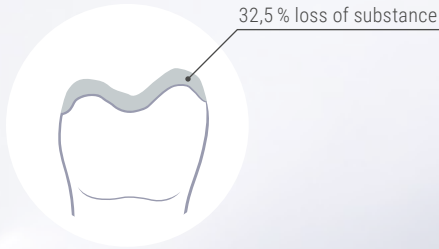
Clearly reduced loss of hard dental substance – and fewer biological risks.

Disadvantage:

The preparation of occlusal onlays used to be difficult without special instruments from a technical point of view.



Minimally preparation for an occlusal onlay on a first molar.



The loss of substance involved with the preparation for occlusal onlays* is less than half of that caused by the preparation of crowns.

*) from: Edelhoff D, Sorensen JA.: Tooth structure removal associated with various preparation designs for posterior teeth. Int J Periodontics Restorative Dent. 2002 Jun;22(3):241-9.

Special instruments. Simple preparation.



Private Lecturer Dr. M. Oliver Ahlers

Specialist in function diagnostic and therapy
Head of the CMD Center, Hamburg-Eppendorf



Prof. Dr. Daniel Edelhoff

Specialist in dental prosthetics Director of the
Poliklinik für Zahnärztliche Prothetik
LMU Munich

These days, indirect all-ceramic restorations are gaining in popularity all the time. They do, however, require special shapes to allow for the properties of the materials and to ensure firm fixation. To this end, preparation guidelines* were compiled and special preparation instruments** were developed to suit the requirements of all-ceramic inlays, partial crowns and crowns. Beyond the traditional options, the properties of the high-strength dental ceramics – such as for example monolithic lithium silicate – open the door to new, less invasive types of preparation.

These new preparations greatly reduce the trauma involved with the grinding of the site and the fitting of the restoration and therefore, the risk of pulpitis. This is particularly important from a clinical aspect because post-operative pulpitis is the main risk associated with crowns and partial crowns.

In response to this, the DGPro (German Association for Prosthetic Dental Medicine [...] and Biomaterials) issued a statement in 2004 in which they recommended that, to reduce the risk of pulpitis, dentists should check other options first before crowning a tooth. In case of defects limited to the occlusal area, suitable alternatives might include occlusal onlays (also called occlusal veneers or table tops). These types of restorations are, however, difficult to prepare with traditional instruments. This prompted us to put together a whole new sequence of preparation steps and develop appropriate new abrasive instruments that greatly facilitate the procedure.

Indications

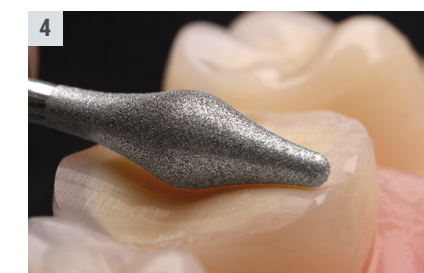
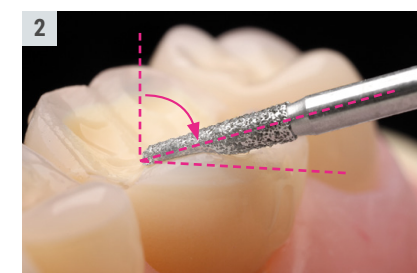
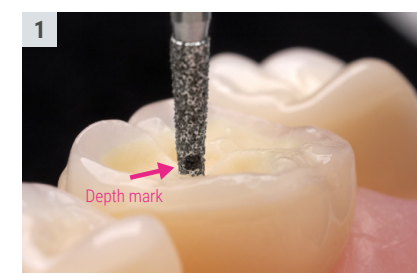
Preparation of occlusal onlays

- for the therapy of carious teeth
- for the treatment of individual or several premolars and molars damaged by bruxism and/or biocorrosion
- to restore the occlusion

*** Refers to Ivoclar Vivadent IPS e.max CAD (LS2) in case of adhesive fixation (as at 11/2018). Please observe the instructions provided by the manufacturer of the material.

* Ahlers, M.O., Blunck, U., Hajtő, J., Pröbster, L., Frankenberger, R.: "Guidelines for the Preparation of CAD/CAM Ceramic Inlays and Partial Crowns" Int J Computer Dent 12,4 (2009) 309–325

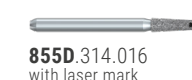
** "Expert Set 4562 ST for ceramic inlays/partial crowns" and "Expert Set 4573ST for ceramic crowns"



Pre-preparation

According to the information currently provided by manufacturers, occlusal onlays made of lithium silicate require a minimum thickness of 1 mm***. Teeth damaged by biocorrosion often have an irregular shape.

It is therefore recommended to unite the steps of depth marking and pre-contouring in a pre-preparation process. To this end, we have provided an abrasive diamond instrument of a suitable shape with a black laser mark at 1 mm from the instrument tip. Whenever you wish to remove occlusal substance, apply the instrument 855D to the occlusal surface in a vertical position and prepare guide grooves with a depth of 1 mm [1]. Then even out the occlusal surface, making sure to maintain the correct cusp-fossa relationship (see image) and level any sharp burr at the edges of the occlusal surface [2]. Like this, you can control the amount of substance removed already at the pre-preparation stage – completely without a depth marker – unless, of course, the loss of dental hard substance is so extensive that there is no need to create further occlusal space.



Occlusal contouring and finishing

Ceramic preparations* require perfectly round contours. The centre of the occlusal surface needs to have a concave shape, whereas the area of the former cusps should have a convex shape to optimally support the occlusal onlay. Since none of the previously existing abrasive instruments were able to create such a special shape, we developed brand new occlusal abrasive cutters to this end, the so-called OccluShapers (370). These are the first instruments to be able to combine both shapes. To ensure that the abrasive instruments [3] match the occlusal surfaces of each tooth, the OccluShapers are available in 2 sizes, one for molars and another one for premolars. To complete the range, we have added finishers of matching shape 8370 [4]. For occlusal contouring, prepare the occlusal surface with an OccluShaper of suitable size in a mesio-distal direction, along the central fissure. Repeat with a finisher of the same size and congruent shape.

OccluShaper

for premolars



370.314.030
Contouring



8370.314.030
Finishing

for molars



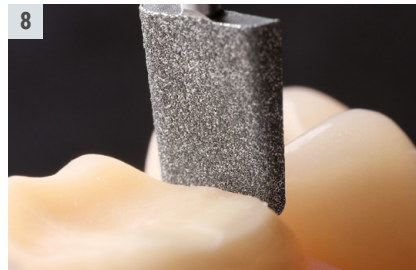
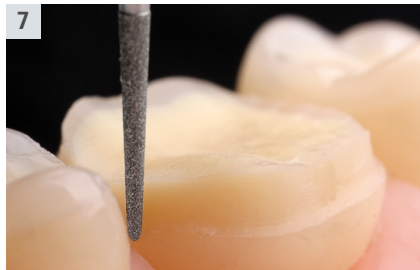
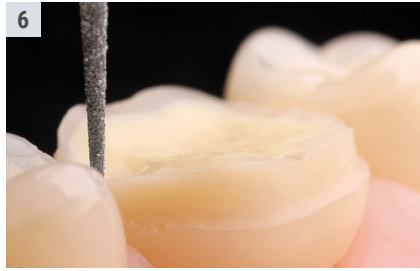
370.314.035
Contouring



8370.314.035
Finishing



8849P.314.016



Separation and finishing

Minimally invasive preparations do not stop at the interproximal region. That's why the set includes particularly slim separating instruments that allow interproximal preparation in the dental enamel. Prepare the interproximal region with the separating instrument 858 in an axial direction, protecting the adjacent tooth with a tension-free matrix strip and without extending the preparation [6]. Next, smooth the interproximal surface with a finisher of matching shape 8858 in preparation for impression taking and production of the restoration [7].

As an even better alternative – compared to the finisher 8858 –, we recommend our sonic tips SFM6 and SFD6 [8] for interproximal smoothing and finishing which we specially developed in line with our occlusal onlay set. Coated with diamond grit on one side only, the geometry of these sonic tips was specially made for the interproximal preparation prior to applying occlusal onlays. Our tests revealed that these tips are particularly suitable for the interproximal finishing of crown preparations. You will be amazed to see how fast interproximal surfaces can be smoothed with these tips – without any risk of damaging the neighbouring teeth!

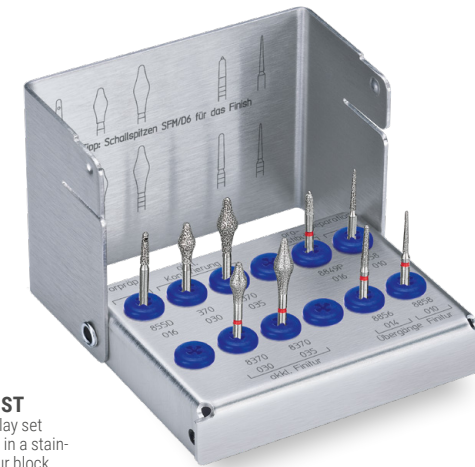
Note: The SFM6 and SFD6 are **not** suitable for the interproximal preparation prior to inserting ceramic inlays! Please use our sonic tips SFM7 and SFD7 instead – they were specially designed for this purpose!

Transitions

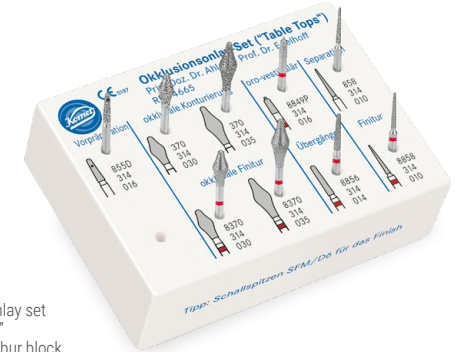
To finish the treatment, connect the vestibular and oral preparations with the interproximal preparations in all four transitional regions by means of the finisher 8856 – and you're done! [9]



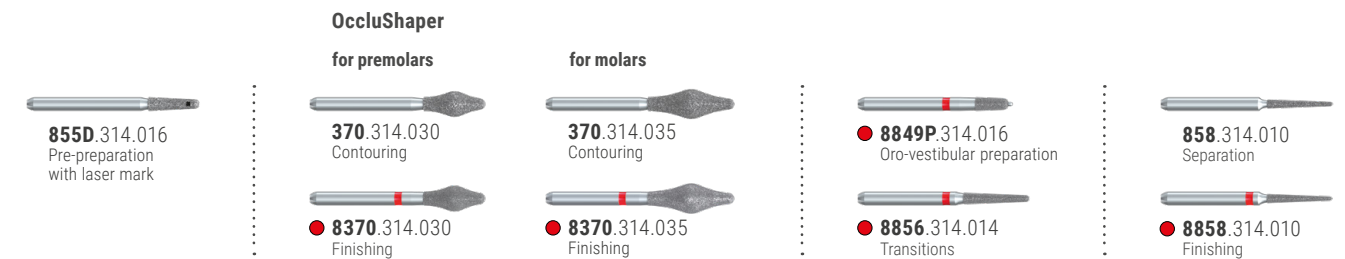
Handy hint: If you have the required equipment available at your practice, we suggest that you smooth the interproximal surface with the sonic tips of matching shape and diamond coating on one side – without the need for a matrix.



Set 4665 ST
Occlusal onlay set
"Table tops" in a stainless steel bur block
(suitable for sterilization)



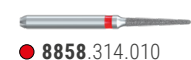
Set 4665
Occlusal onlay set
"Table tops"
in a plastic bur block



TIP: For veneers in the anterior region, we recommend the **Perfect Veneer Preparations Set 4686/ST**.



858.314.010



8858.314.010

Komet Dental

Gebr. Brasseler GmbH & Co. KG
Trophagener Weg 25 · 32657 Lemgo
Postfach 160, 32631 Lemgo · Germany
Telefon +49 (0) 5261 701-0
hello@kometdental.com
Contact for dealers:
export@kometdental.de

Verkauf Deutschland:

Telefon +49 (0) 5261 701-700
Telefax +49 (0) 5261 701-289
info@kometdental.de
www.kometdental.de

Export:

Telefon +49 (0) 5261 701-0
Telefax +49 (0) 5261 701-329
export@kometdental.de
www.kometdental.com

Komet Austria Handelsagentur GmbH
Hellbrunner Straße 15 · 5020 Salzburg
Telefon +43 (0) 662 829-434
Telefax +43 (0) 662 829-435
info@kometdental.at
www.kometdental.at

Komet France

18 rue · Fourcroy · 75017 Paris
Phone +33 (0) 1 43 48 89 90
info@komet.fr
www.komet.fr

Komet Italy

Via Gianbattista Morgagni 36,
37135 Verona
Phone +39 (0) 45 11171911
info@komet.it
www.komet.it

Komet UK

Invoice and general correspondence:
27 Old Gloucester St,
Holborn, London WC1N 3AX
info@kometuk.com
www.kometuk.com

Brasseler®, Komet®, Art2®, CeraBur®, CeraCut®, CeraDrill®,
CeraPost®, DC1®, DIAQ®, FastFile®, F360®, F6 SkyTaper®,
H4MC®, KometBioSeal®, OccluShaper®, OptiPost®, PolyBur®,
PrepMarker®, Procodile®, Procodile Q® and SHAX® are
registered trademarks of Gebr. Brasseler GmbH & Co. KG.

ReFlex® and EndoPilot® are registered trademarks of
Schlumbohm GmbH & Co. KG

Some of the products and designations mentioned in
the text are trademarked, patented or copyrighted.
The absence of a special reference or the sign ® should not
be interpreted as the absence of legal protection.

This publication is copyrighted. All rights, also with regard to
translation, reprint and reproduction (also in the form of
extracts) are reserved. No part of this publication may be
reproduced or reprocessed using electronic systems in any
form or by any means (photocopying, microfilm or other
methods) without the written permission of the editor.

Colours and products are subject to alterations.
Printing errors excepted.

As at July 2025