



Art2 polishers. Unique high gloss in just two steps.



# Index

4		5	Introduction
6		7	Polishing of composite
8		9	Polishing of ceramics
		10	Polishing of metal
		11	Reprocessing of polishers

Brasseler®, Komet®, Art2®, CeraBur®, CeraCut®, CeraDrill®, CeraPost®, DC1®, DIA0®, FastFile®, F360®, F6 SkyTaper®, H4MC®, KometBioSeal®, OccluShaper®, OptiPost®, PolyBur®, PrepMarker®, Procodile®, Procodile Q® and SHAX® are registered trademarks of Gebr. Brasseler GmbH & Co. KG.

ReFlex® and EndoPilot® are registered trademarks of Schlumbohm GmbH & Co. KG

Some of the products and designations mentioned in the text are trademarked, patented or copyrighted. The absence of a special reference or the sign ® should not be interpreted as the absence of legal protection.

This publication is copyrighted. All rights, also with regard to translation, reprint and reproduction (also in the form of extracts) are reserved. No part of this publication may be reproduced or reprocessed using electronic systems in any form or by any means (photocopying, microfilm or other methods) without the written permission of the editor.

Colours and products are subject to alterations. Printing errors excepted.

As at Mai 2025

# Twice as easy: The well thought-out range of polishers for all materials.

Every dentist aspires to achieve a perfect polishing result in little time. To make sure that this everyday job at the practice is accomplished as quickly and efficiently as possible, we have developed Art2 for you. Art2 is a polishing system that deals with practically any application in just two perfectly adapted steps.

The structure and texture of each Art2 polisher are tailor made to suit the various modern filling materials. Finishers and polishers always work together as a perfectly coordinated professional team of two that does its job quickly, effectively and without fuss.

To provide guidance in whatever polishing case you might be faced with, we have put together a handy guideline for you. You can see at a glance which Art2 team you should call upon in each case. To ensure that you always use the instruments in the right order, we have provided the diamond interspersed polishers with figure numbers:

C – Coarse, for smoothing and contouring  
M – Medium for polishing  
F – Fine for final high-gloss polishing

Tipp: For a perfect polishing result, we recommend that you work with irrigation at all times. Make sure to observe the optimum speed indicated for each polisher. This has been defined to ensure the best possible outcome and to reduce wear of the instruments. All Art2 polishers can be reprocessed and, consequently, reused.

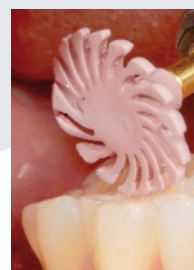


# High shine – to the power of 2: Art2 polishers for composite.

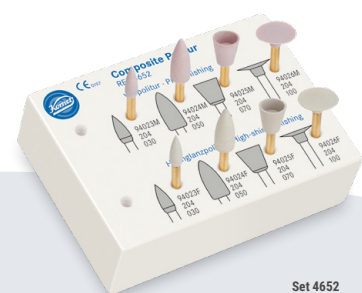
An impressive high-shine and a long service life – the two-step specialists for polishing composite achieve this perfect combination with ease. The initial finishing with a red ring diamond or a tungsten carbide instrument is followed by polishing with a diamond interspersed polisher. Finish.

## Advantages

- Perfect, natural looking high-shine in just two steps
- Long service life, great economy
- Pink pre-polisher for shaping and smoothing
- Light yellow high-shine polisher for a glossy finish



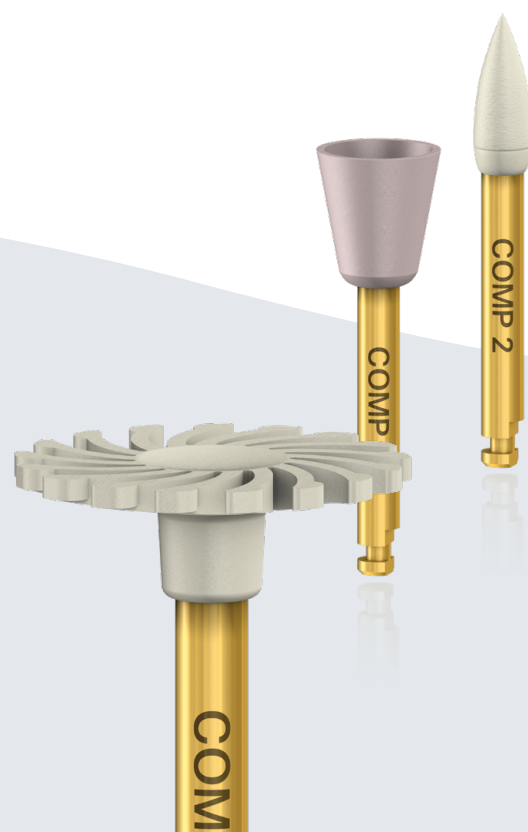
For best results, work at an optimum speed of  $\omega_{opt}$  6,000 rpm and without contact pressure.



**Set 4652**  
2-step composite  
polishing system



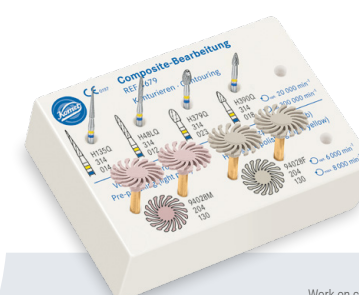
**Set 4669**  
2-step composite  
polishing system



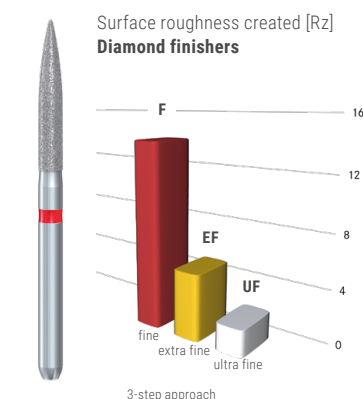
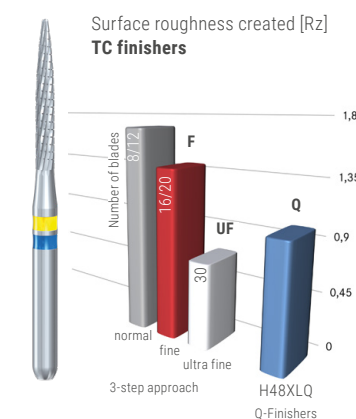
# Double, yet simple: Q-finishers + Art2.

The nonplus ultra in composite finishing: A combination between Q-finishers made of tungsten carbide and the 2-step Art2 polishers. These tungsten carbide instruments create smoother surfaces in just one step than comparable diamond instruments, thus

allowing you to save a lot of time and effort during the subsequent polishing. Art2 polishers create almost plane surfaces with an esthetically pleasing high shine. Depending on the quality of the work, the pre-polishing step can even be omitted in many cases.



**Set 4679**  
Work on composite



## Handy hint:

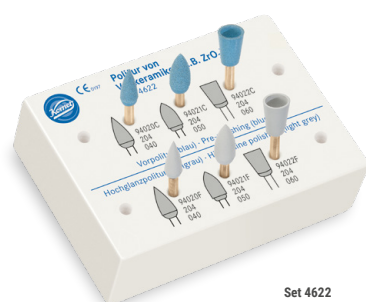
If the adjacent teeth require profiled structures, you should use a diamond instrument and shape and maintain the surface pattern with the slightly abrasive pre-polishers. Both finishing methods can be followed with Art2 polishers for ideal polishing results.

# They turn hardness into beauty: Art2 polishers for all-ceramics.

Ceramic restorations are state-of-the-art when it comes to reconstructing damaged teeth. That's why highly esthetic white restorations enjoy huge popularity these days, but all-ceramic restorations require high-performance polishers. Komet comes up with the perfect answer: the polishers from the Art2 range. The desired result can be achieved in two easy steps: abrasive pre-polishing followed by high-shine polishing for a perfect, long-lasting finish.

## Advantages

- Long service life and great economy
- Time-saving pre-polishing after corrections
- Brilliant high gloss in just two polishing steps



**Set 4622**  
Set for polishing all-ceramic restorations (e.g. ZrO<sub>2</sub>)

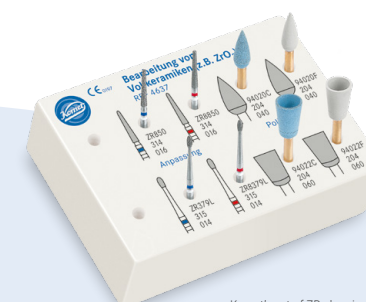


For best results, work at an optimum speed of  $\varnothing_{opt.}$  6,000 rpm, with water spray and without contact pressure.

# ZR abrasives + Art2 polishers for ceramic challenges.

All-ceramic restorations count among the greatest challenges dentists and dental technicians are faced with. Due to their extreme hardness, these unique materials stubbornly resist machining. There is, however, practically no alternative to match the extreme durability and esthetically pleasing appearance of all-ceramic restorations. In response to this, Komet offers you abrasive instruments specially developed for this material. Komet ZR abrasives are distinguished by their long service life and outstanding

substance removal rate that outperforms that of conventional diamond instruments. Subsequently, Art2 polishers create an impressive high-shine finish.



**Set 4637**  
Komet's set of ZR abrasives and Art2 polishers offers you a competent solution for adapting and rectifying restorations.



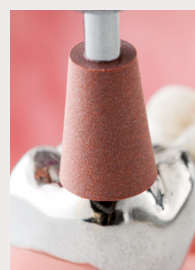
## Go for Gold! 2-step polishers for all alloys.

Traditional metal restorations are far from obsolete and continue to be considered gold standard. Komet offers brown and green metal polishers for polishing amalgam as well as precious and non-precious metal alloys.

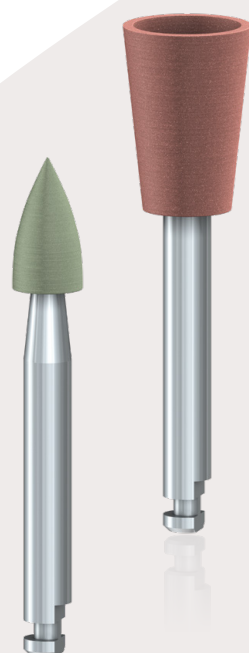
The brown polisher is indicated for pre-polishing and fine corrections, whereas the green version is used in the following step for high-shine polishing. These polishers come in a range of shapes, the most popular ones being "small flame" (9608, 9618) and "cup" (9606, 9616).

### Advantages

- Universal use on all metal alloys
- Dimensional stability
- Suitable for intraoral use



Optimum use:  
🔄<sub>opt</sub> 6,000 rpm



## Double the joy: Art2 polishers can be reprocessed.

Thanks to their excellent durability, Komet polishers can be used for a very long time, provided that they are reprocessed correctly. Aggressive detergents and disinfectants can attack your instruments, especially if the prescribed immersion time is exceeded. Detergents containing alcohol can even dissolve the synthetic structure of polishers during reprocessing. Komet has the answer: Compatible with the materials to be treated, economic in use and completely free of alcohol, our detergent DC Evo provides the ideal solution for uncomplicated reprocessing of instruments.

This is how it's done:

Komet has issued a video on the correct reprocessing of polishers to show you how to reprocess your polishers in compliance with the applicable standards.

Always on the safe side and handy for the next inspection: With the instructions provided by the manufacturer, you always reprocess according to a validated process in accordance with the relevant directives.



**Komet Dental**

Gebr. Brasseler GmbH & Co. KG  
Trophagener Weg 25 · 32657 Lemgo  
Postfach 160, 32631 Lemgo · Germany  
Telefon +49 (0) 5261 701-0  
hello@kometdental.com  
Contact for dealers:  
export@kometdental.de

**Verkauf Deutschland:**

Telefon +49 (0) 5261 701-700  
Telefax +49 (0) 5261 701-289  
info@kometdental.de  
www.kometdental.de

**Export:**

Telefon +49 (0) 5261 701-0  
Telefax +49 (0) 5261 701-329  
export@kometdental.de  
www.kometdental.com

**Komet Austria** Handelsagentur GmbH  
Hellbrunner Straße 15 · 5020 Salzburg  
Telefon +43 (0) 662 829-434  
Telefax +43 (0) 662 829-435  
info@kometdental.at  
www.kometdental.at

**Komet France**

18 rue · Fourcroy · 75017 Paris  
Phone +33 (0) 1 43 48 89 90  
info@komet.fr  
www.komet.fr

**Komet Italy**

Via Gianbattista Morgagni 36,  
37 135 Verona  
Phone +39 (0) 45 11171911  
info@komet.it  
www.komet.it

**Komet UK**

Invoice an general correspondence:  
27 Old Gloucester St,  
Holborn, London WC1N 3AX  
info@kometuk.com  
www.kometuk.com