



SonicLine – Sonic tips for
a vast range of applications.





SonicLine

Brasseler®, Komet®, Art2®, CeraBur®, CeraCut®, CeraDrill®, CeraPost®, DC1®, DIA0®, FastFile®, F360®, F6 SkyTaper®, H4MC®, KometBioSeal®, OccluShaper®, OptiPost®, PolyBur®, PrepMarker®, Procodile®, Procodile Q® and SHAX® are registered trademarks of Gebr. Brasseler GmbH & Co. KG.

ReFlex® and EndoPilot® are registered trademarks of Schlumbohm GmbH & Co. KG

Some of the products and designations mentioned in the text are trademarked, patented or copyrighted. The absence of a special reference or the sign ® should not be interpreted as the absence of legal protection.

This publication is copyrighted. All rights, also with regard to translation, reprint and reproduction (also in the form of extracts) are reserved. No part of this publication may be reproduced or reprocessed using electronic systems in any form or by any means (photocopying, microfilm or other methods) without the written permission of the editor.

Colours and products are subject to alterations. Printing errors excepted.

As at February 2025

4 5	SonicLine
	Prophylaxis
6 7	Scaling
8	Implantat prophylaxis
	Periodontology
9	Removal of concretions
10 11	Root planing
12	Treatment of furcations
	Conservative dentistry
13	Work on fissures
14 15	Cavity preparation
16 17	Micro/Bevel
18 19	Stripping/Shaping
	Prosthetic dentistry
20 21	Veneers
22 23	Interproximal finishing
24 25	Crown preparation
	Endodontics
26 27	Orthograde Endodontie
28 29	Retrograde Endodontie
	Oral surgery
30 31	Surgery
32 33	Lateral sinus lift
34	Work on bones
35	Surgical crown lengthening
36	Sonic hand piece
37 38	Accessories



As the leading manufacturer of dental instruments worldwide, we can offer you a vast range of products. We hereby proudly present our SonicLine, the extensive line of sonic tips made by Komet.

Our constantly growing range of high-quality sonic tips includes tips for prophylaxis, periodontology, implant prophylaxis, preparation of crowns, preparation of cavities, work on fillings, orthodontics, veneers, work on fissures, endodontics and oral surgery. On the next few pages, we would like to give you detailed information on the vast scope of applications.

* When using the tips for surgical indications, make sure to use a sonic hand piece that has been authorized for surgery. These include the Komet SF1LM/S and the SONICflex™ hand piece (series 2003) provided by KaVo.

** The sonic hand-pieces Ti-Max, series S970L/KL/SL, made by NSK can only be used in combination with the tips for prophylaxis and periodontal treatments SF1/2/3/4/4L/4R/6/8



Made in Germany, the SonicLine comprises a comprehensive range of high-quality sonic tips that cover a multitude of indications. The instruments owe their effective cutting power to the fact that they can perform elliptical movements in all directions.

Thanks to their clear labelling, the sonic tips are easy to identify. The order number is laser etched onto each tip. Tips coated with fine grain are provided with a red dot for identification. The sonic tips can be reprocessed in a Miele washer/disinfector by means of a rinse adapter which is part of a validated procedure. Instructions on the reprocessing of sonic tips can be ordered from the manufacturer.

Apart from an ample choice of sonic tips, Komet's SonicLine also comprises a sonic handpiece suitable for every authorized sonic tip – the air scaler SF1LM/S. This air-powered scaler is distinguished by its

amazing Manufacturer's Information on the reprocessing of sonic tips (410381) versatility and impressive performance.

For further information on the SF1LM/S, please turn to page 38 of this brochure.

Important notes:

The sonic tips* made by Komet can not only be used in Komet's sonic hand-piece SF1LM/S, but also

- In the Scalers made by the co. W&H (Series Proxeo® ZA-55/L/LM/M/LS and Proxeo® ST ZE-55RM/BC, Series Synea® ZA-55/L/LM/M or series Alegra®ST ZE-55RM/BC), as well as
- In the SONICflex™ hand-piece provided by the company KaVo (Series 2000N/L/X/LX or series 2003N/L/X/LX) or
- In the SIROAIR L of the co. Sirona®.
- In the sonic hand-pieces Ti-Max, series S970L/KL/SL, made by NSK**





Scalers

Tips for removing dental calculus | SF1-3, SF6

Indication:

- Supra and subgingival removal of calculus (up to a depth of 2 mm) [1/2]

Advantages:

- Mechanical work is much less tiring than work with manual instruments
- The elliptical movements in all directions performed by the sonic hand piece make circular work as easy as child's play

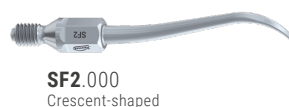
Recommendations for use in the

Komet SF1LM/S:

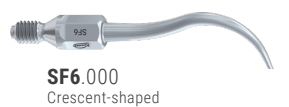
- Start up sonic tip prior to application to the tooth, providing plenty of spray cooling
- Power setting ❶ : gentle treatments
- Power setting ❷ : standard treatments
- Power setting ❸ : only for a short period of time



SF1.000
universal



SF2.000
Crescent-shaped



SF6.000
Crescent-shaped



SF3.000
Perio



Scalers

Sips for the removal of calculus | SF8

A reliable tip for dental hygienists. The SF8 can be used for removing concretions in the supragingival and in the subgingival region. It constitutes an ideal connection between the removal of calculus and periodontal scaling during professional cleaning.

Indication:

- Supra and subgingival removal of calculus (up to a depth of 4 mm)

Advantages:

- Gentle, yet precise removal of concretions
- Improved cooling
- Easier rinsing of periodontal pockets
- Suitable for work in pockets with a depth of up to 4 mm [1]

Recommendations for use in the

Komet SF1LM/S:

- Start up sonic tip prior to application to the tooth, providing plenty of spray-cooling
- Power setting ❶ : gentle treatments
- Power setting ❷ : standard treatments
- Power setting ❸ : only for a short period of time



SF8.000
Perio



Implant prophylaxis

Removal of concrements from implant necks | SF1982

Indications:

- Polymer pins for non-abrasive removal of subgingival concrements and soft deposits from smooth implant necks
- Removal of plaque
- Removal of new deposits of calculus

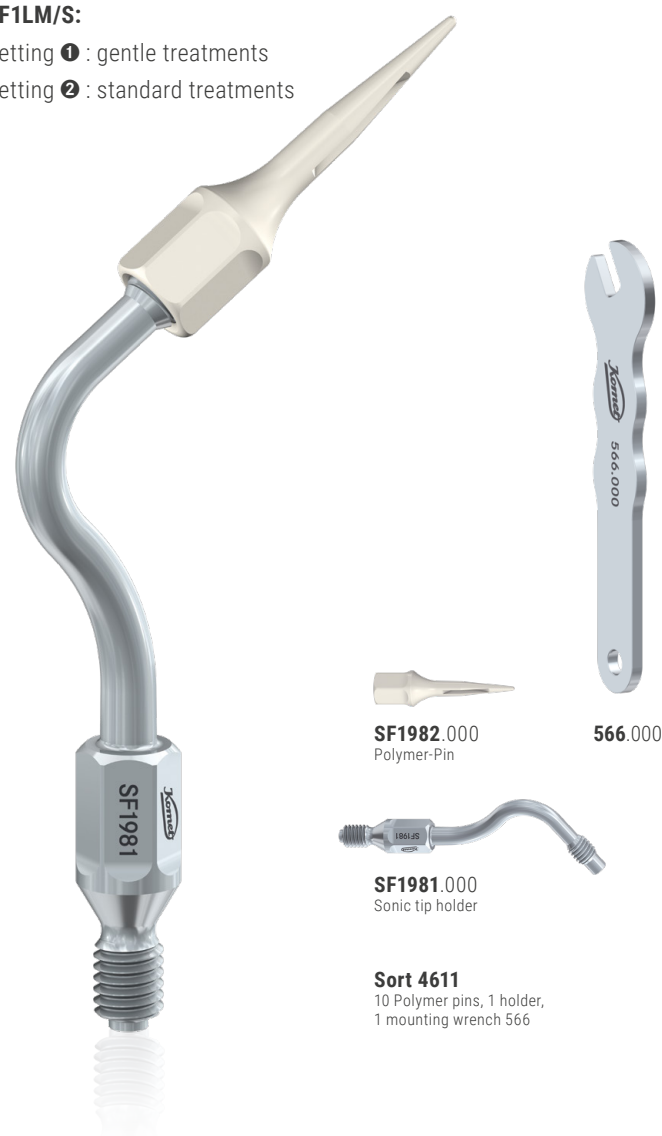
Advantages:

- No abrasion, no scratch artifacts
- No roughening of smooth neck areas
- Easy-to-handle screwed joint between the holder and the Polymer pin
- The pin is disposable. The holder can be reused, reprocessed and re-sterilised

Recommendations for use in the

Komet SF1LM/S:

- Power setting ❶ : gentle treatments
- Power setting ❷ : standard treatments



Periodontal treatments

Removal of concrements | SF4, 4L, 4R

Indication:

- Removal of soft plaque in deep periodontal pockets (up to a depth of 9 mm) [1]

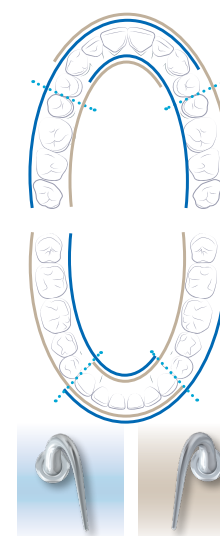
Advantages:

- The minimally invasive function of the sonic tips allows gentle work, protecting the collagenous soft tissue and the root surface
- Improved bacterial management [2]

Recommendations for use in the

Komet SF1LM/S:

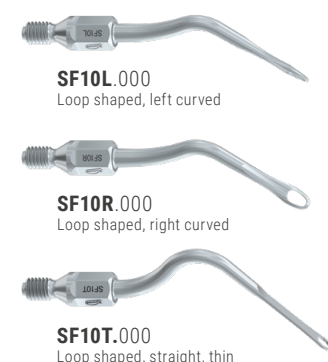
- Start up sonic tip prior to application to the tooth, providing plenty of spray cooling
- Power setting ❶ : gentle treatments
- Power setting ❷ : standard treatments
- Power setting ❸ : only for a short period of time


SF4L.000
SF4R.000


Periodontal treatments

Planing of root surfaces | SF10L/R/T

Our sonic tips SF10L/R/T were developed in close cooperation with Prof. Günay of the Medical University Hanover. Distinguished by its clever design with a rounded tip and sharp-edged inner part, the SF10L/R/T is ideally suitable for the minimally invasive, particularly effective removal of soft and hard deposits and planing of the root surface. Its rounded tip greatly reduces the risk of injury to the patient and the dentist. The special shape is suitable for a range of different tooth anatomies and facilitates thorough cleaning. The slim, straight shape of the sonic tip (SF10T) makes it particularly suitable for gentle, yet precise work in deeper gingival pockets (> 9 mm) in crowded conditions.



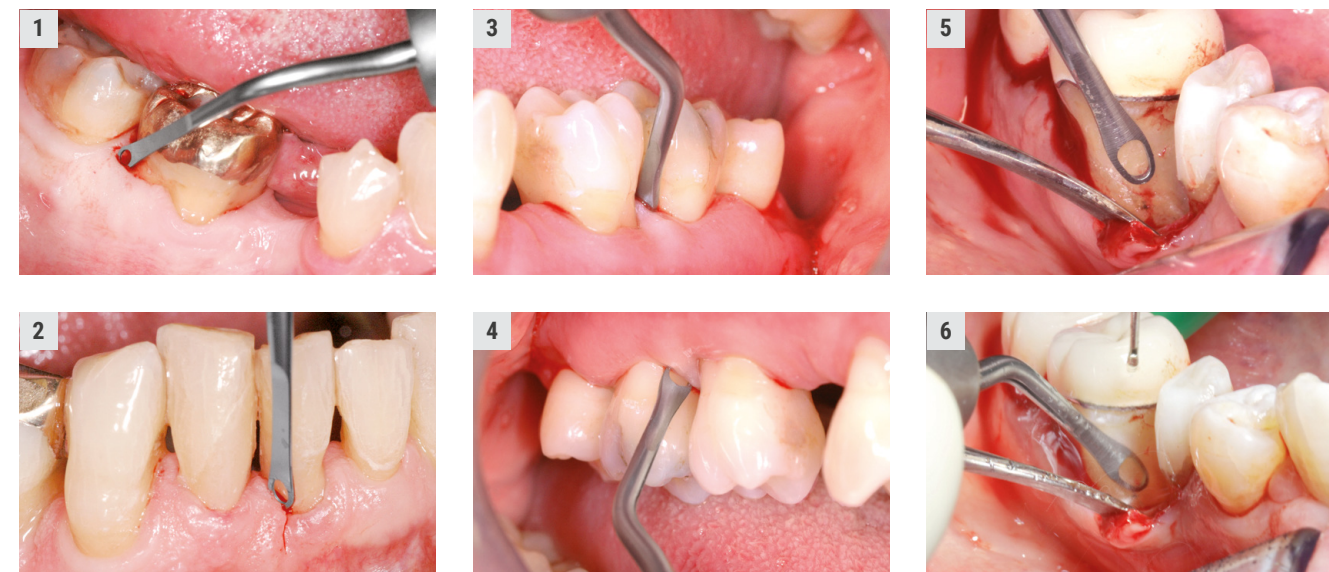
German utility patent DE20 2015 100 778
European patent EP2 617 382



Scientific advice:
Prof. Günay, Medical University
Hannover/Deutschland

Indication:

- Minimally invasive, particularly effective removal of soft and hard deposits and planing of the root surface whilst reducing the risk of injury to the patient.

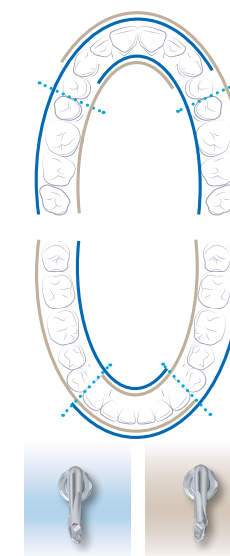
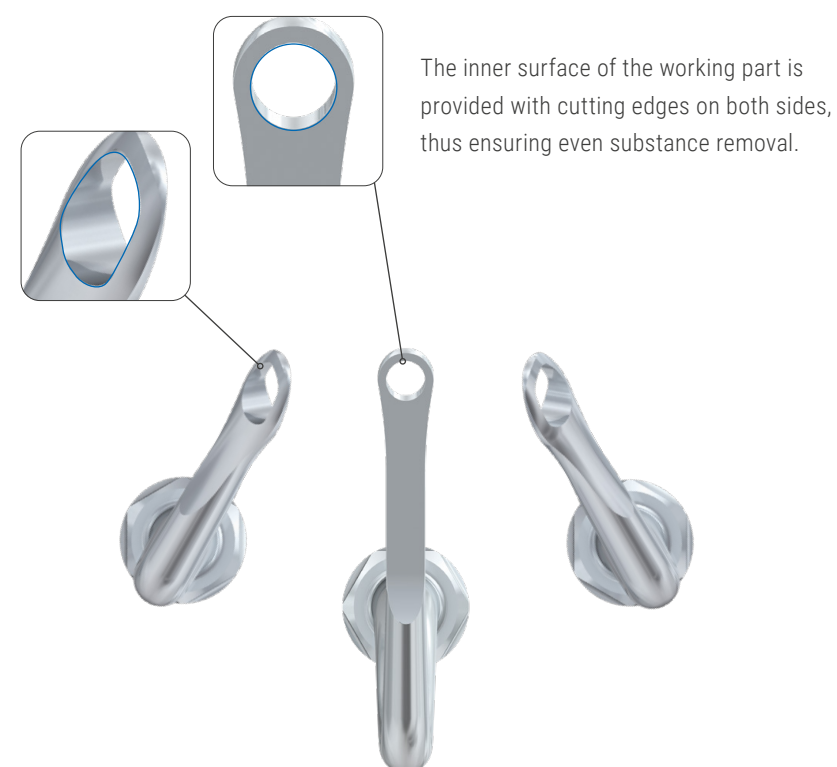


Advantages:

- Gentle, thanks to a rounded tip and effective because the working part is provided with cutting edges on both sides (see image)
- Prevents damage to the soft tissue
- Suitable for treatments with or without the creation of a flap [1–6]

Recommendations for use in the Komet SF1LM/S:

- Power setting **1** : standard treatments
- Power setting **2** : only for a short period of time



SF10L.000

SF10R.000

Periodontal treatments

Treatment of furcations | SF11

The difficult access and the bizarre structures in the furcation region pose a great challenge to the user. This is why we developed the sonic tip SF11 in close cooperation with Prof. Günay of the Hannover Medical University. Distinguished by its ingenious new shape, this instrument truly revolutionizes the mechanical treatment of furcations. The SF11 can also be used as part of a root treatment without flap which is particularly gentle on the soft tissue to be treated. Provided with 6 blades, this tip is ideally suitable for the effective cleaning even of particularly hard-to-reach furcations. The special shape is suitable for a range of different tooth anatomies.

Indication:

- Minimally invasive, particularly effective removal of soft and hard deposits in hard-to-reach concavities
- Enlarging the entry of the furcation to create optimum hygienic conditions
- Suitable for use during all stages of periodontal furcation treatments:
- Prevention, therapy and aftercare

Advantages:

- Six blades for gentle, yet effective substance removal
- Efficient, atraumatic work without damage to the soft tissue
- Suitable for periodontal treatments with and without a flap [1–4]



Scientific advice:
Prof. Günay, Medical University
Hannover/Deutschland

Recommendations for use in the Komet SF1LM/S:

- Power setting ❶ : standard treatments



SF11.000
Bud

Opening of fissures



Indications:

Minimally invasive opening of fissures [1/2], for example in the following situations:

- Detection of hidden caries
- Removal of fissure caries
- Preparation for fissure sealing

Advantage:

The relatively low oscillation amplitude and the small diameter of the instrument allow minimally invasive work.

Recommendations for use in the Komet SF1LM/S:

- Start up sonic tip prior to application to the tooth, providing plenty of spray cooling.
- Power setting ❶ : Gentle opening of fissures
- Power setting ❷ : standard treatments
- Power setting ❸ : only for a short period of time



SF849.000.009

Ideally suited for
CAD/CAM techniques

Interproximal cavity preparation

For perfect restoration margins

In close cooperation with Dr. M. Oliver Ahlers, Hamburg, Komet has developed sonic tips for the preparation of interproximal cavities. It was our goal to create new sonic tips to facilitate the final shaping of cavities and the smoothing of the interproximal cavity margins. The result: 4 diamond coated sonic tips bisected lengthways (mesial/distal) that are ideally suited for work on molars and premolars. These tips were developed in line with the preparation guidelines for ceramic restorations, with a view to reducing the technical requirements and facilitating the shaping of the interproximal boxes. Thanks to their rounded angles in the transition area between the axial and the shoulder region,

these sonic tips are capable of preparing the cavities to a perfectly chamfered shape, thus creating ideal conditions for taking a precise impression of the preparation, with either conventional impression material or by means of radiographic techniques. The new sonic tips create perfect conditions for the subsequent work in the dental laboratory. The clear and concise shape of the sonic tips greatly facilitates the creation of precise restorations.

For the preparation of the basic cavity prior to receiving ceramic inlays or partial crowns, we recommend our expert set 4562ST.

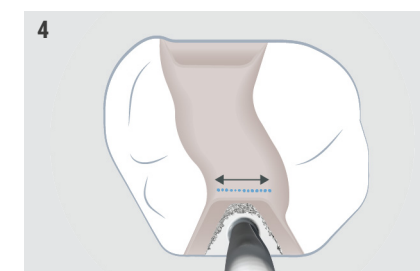
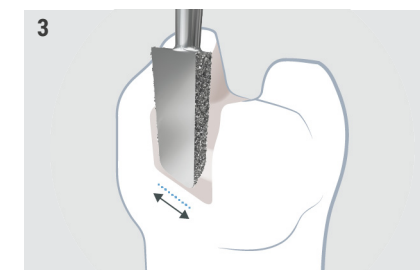
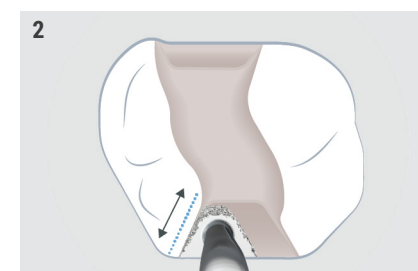
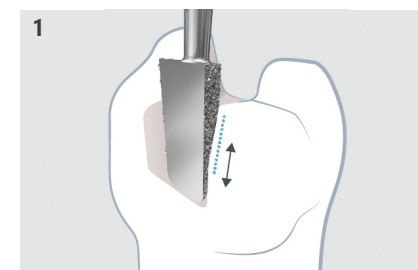


4562ST
Expert Set in
a sterilizable
stainless steel
bur block



4 arguments in favour of Komet tips:

- 1 Optimized diamond coating (60 µm instead of 40 µm) to enable shaping and finishing.
- 2 The shape of the tips is adapted to today's ceramic inlays (instead of the previously used ceramic inserts). This guarantees plane lateral surfaces and transitions rounded in all directions.
- 3 Greater axial depth for improved shaping of the buccal and lingual surfaces of the interproximal box as well as the floor of the box.
- 4 The tip is available in 2 sizes each for premolars and molars.



Indications:

- Final shaping and finishing of interproximal cavities and smoothing of interproximal cavity margins in molars and premolars [1–4]. The following restorations can be used subsequently:
- Direct fillings made of tooth-colored composites
- Inlays/partial crowns made of pressed ceramics or CAD/CAM milled ceramics

Advantages:

- Rounded shapes for the preparation prior to receiving ceramic inlays and composite fillings
- 2 different sizes for work on small and large lateral defects
- The ideal interproximal cavity angle prevents unsupported enamel prisms and creates restoration margins that can be clearly read and scanned

Recommendations for use in the Komet SF1LM/S:

- Start up sonic tip prior to application to the tooth, providing plenty of spray cooling.
- Power setting 1 : finishing
- Power setting 3 : shaping

For premolars:



For molars:



Micro/Bevel

Sonic tips for micropreparation

In conservative dentistry, top priority is given to the preservation of natural hard tooth substance. The basic concept of minimally invasive dentistry has, therefore, inevitably resulted in new demands on the design of instruments. In addition to our rotary instruments for micropreparation (Sets 4337 and 4383) with specially slender necks and small working parts, Komet now offers a range of sonic tips for the minimally invasive treatment of incipient caries. Treatment of caries with conventional instruments poses a risk of eliminating too much tooth substance, particularly in the interproximal region where damage to the sound substance of adjacent teeth often cannot be prevented.

This is where the micro tips come into play. Their small, delicate working parts were specially designed for the preparation of tiny and hard-to-reach lesions. The user can choose between a small (size 016) and big (size 024) hemisphere. The tips are suitable for both occlusal and lateral access to the cavity.

The Bevel tips are intended for beveling the margins with precision to an angle of 45°.

Available in mesial and distal versions, all tips are coated on one side only to prevent damage to the adjacent tooth. The use of magnifying glasses or a microscope further improves the conditions for the minimally invasive treatment of tiny lesions.



Indications:

- Defect orientated preparation of micro lesions without damaging the adjacent teeth with SF30D/M (available with a small [1] or big [2] hemisphere)
- Beveling of cavity margins with SF58D/M [3]

Advantages:

- Coated on one side only to prevent damage to the adjacent teeth
- Thanks to the oscillating movements and minimally invasive preparation, these tips are very popular in pediatric dentistry
- Precise beveling of the cavity margins to optimize the quality of the restoration [3]

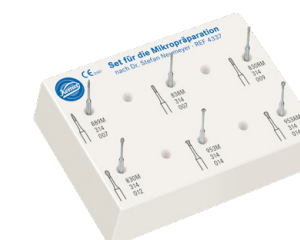
Recommendations for use in the Komet SF1LM/S:

- Start up sonic tip prior to application to the tooth, providing plenty of spray cooling
- Power setting ① : gentle treatments

Micro tips:

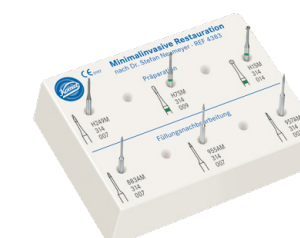


Bevel-Spitzen:



Set 4337.314
or micropreparation as suggested
by Dr. Stefan Neumeyer*

* also available with FG short shank 313



Set 4383
for minimally restoration as suggested
by Dr. Stefan Neumeyer

Stripping | Shaping

Thin sonic tips for interproximal surfaces

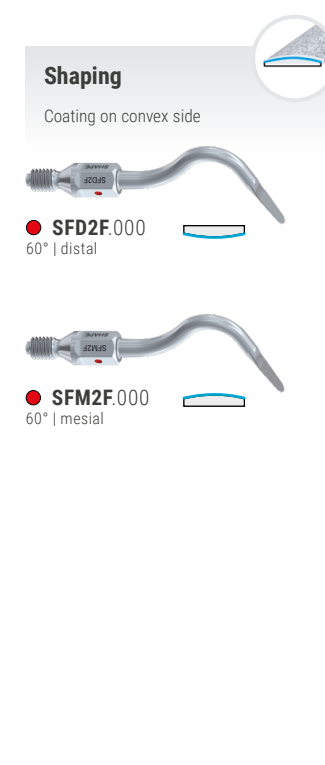
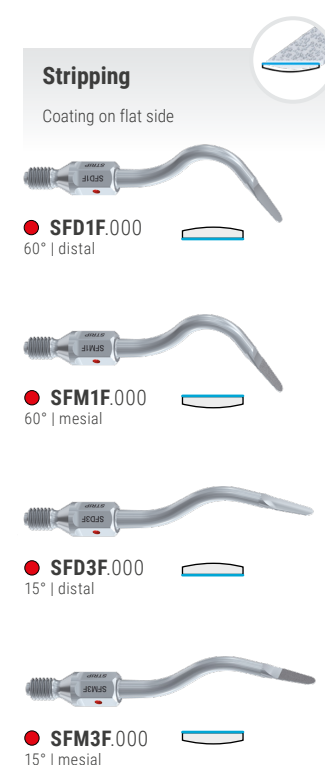
In close collaboration with Dr. Ivo Agabiti, we developed very thin sonic tips covered in fine grain which are designed for trimming interproximal surfaces.

Indications:

- Separation prior to the preparation of crown cores
- Smoothing of sharp transitions at the interproximal preparation limit as part of the preparation of cavities [1/2]
- Anatomical shaping of the interproximal surfaces of composite fillings [3/4]
- Interproximal enamel reductions (IER) as part of orthodontic treatments [5/6]

Advantages:

- The tips are covered on one side only ("M" for mesial and "D" for distal surfaces). This allows the neighbouring teeth to remain untouched.
- Choice of flat (for stripping) and convex tips (for shaping)



Recommendations for use in the Komet SF1LM/S:

- Start up sonic tip prior to application to the tooth, providing plenty of spray cooling
- Power setting ① : gentle treatments



Scientific advice:
Dr. Ivo Agabiti, Pesaro/Italy



Veneers

SF8850

Sonic tips for veneers, developed by Dr. Schwenk and Dr. Striegel, Nuremberg.

Indication:

Finishing the veneers [3] after preparation with rotary instruments of identical shape.

Advantage:

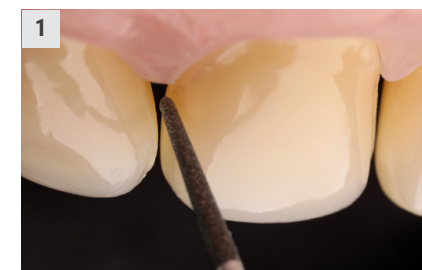
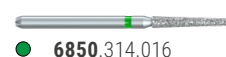
The combination of fine grit and a low oscillation amplitude results in the creation of a very fine surface [1], which is an indispensable precondition for a tight prosthetic margin [2].

Recommendations for use:

- First prepare the veneers with rotary instruments the usual way:
- Shaping with the instrument 6850.314.016
- Finishing with the instrument 8850.314.016
- Fine trimming, especially of the edges, with the fine grain sonic tip SF8850
- Start up sonic tip prior to application to the tooth, providing plenty of spray cooling
- Power setting ❶ in the Komet SF1LM/S: Fine trimming of surfaces



Scientific advice:
Dr. Thomas Schwenk
Dr. Marcus Striegel



Veneer Finisher SF8868L/R

Sonic tips for finishing interproximal surfaces as part of veneer technique developed in cooperation with Private Lecturer Dr. Ahlers, Hamburg, and Prof. Dr. Edelhoff.

Indication:

Finishing the interproximal surfaces of a restoration with veneers after preparation with rotary instruments with identical shape.

Advantage:

The tips are bisected lengthwise and diamond coated on one side only. This prevents injury to the adjacent teeth during finishing.

Recommended use:

- First, prepare the veneers in the usual manner with rotary instruments
- Shaping: 868.314.016
- Finishing: 8868.314.016
- The interproximal preparation is carried out with the instrument SF8868L or SF8868R
- Start up the sonic tip with plenty of spray cooling prior to applying it to the tooth
- Power level ❶ in the Komet SF1LM/S:
- Fine trimming of the interproximal surfaces



Scientific advice:
Priv.-Doz. Dr. Ahlers
Prof. Dr. Edelhoff



Note:
The tips perfectly complement the Perfect Veneer Preparation Set 4686ST.

4686ST
PVP Set in a sterilizable stainless steel block

Interproximal finishing

For perfect interproximal surfaces

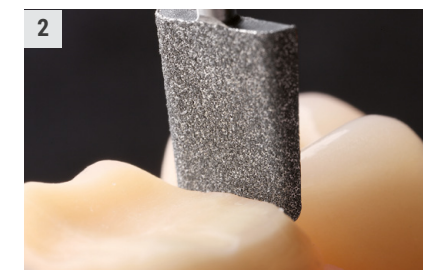
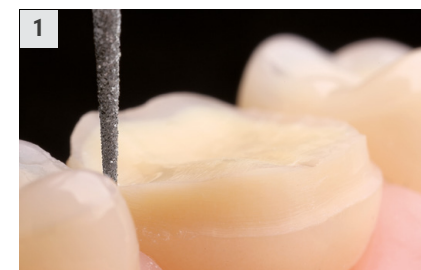
In close collaboration with private lecturer Dr. Oliver Ahlers, Hamburg, and Prof. Dr. Daniel Edelhoff, Munich, we have developed sonic tips for smoothing and finishing interproximal surfaces. The user can choose between 2 sonic tips with working parts that are bisected lengthwise (mesial and distal). When preparing the interproximal region, the aim is to create even and straight surfaces and prevent damage to the adjacent tooth.

This is, however, difficult to achieve with traditional rotary instruments. To allow space-saving work, the rotary instruments used for this purpose are usually thin but these instruments tend to create slightly wavy surfaces. This is where the new sonic tips come into play. After eliminating the interproximal contact point with rotary instruments, these new interproximal sonic tips are used to create straight and even surfaces.



Set 4665 ST
Occlusal onlay set
in a sterilizable stainless steel tray

Handy hint:
These tips ideally complement
the occlusal onlay set 4665ST.



Indications:

- Use as part of interproximal crown preparations and minimally invasive preparation for occlusal onlays
- Smoothing and finishing of interproximal surfaces [2] after separation with a traditional rotary instrument (e.g. 858.314.010) [1].

Advantages:

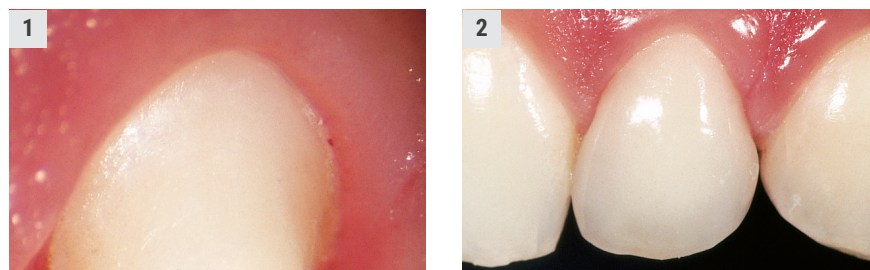
- Thanks to their special design (wider than rotary separating instruments in size 010), these tips can create smooth interproximal surfaces easier than for example the finishing instrument 8858.314.010
- The tips are only coated on one side to prevent damage to the adjacent tooth

Recommendations for use in the Komet SF1LM/S:

- Start up sonic tip prior to make contact with the tooth, providing plenty of spray cooling
- Power setting ① : Finishing
- Power setting ③ : Shaping



Handy hint:
We recommend our sonic tips
SFM7 and SFD7 (pages 14, 15) for
the preparation of interproximal
ceramic inlays.



Preparation of crowns

The perfect complement to rotary instruments

According to Dr. Domenico Massironi, the "best synergy effects are created by a combination of rotary and sonic instruments".

We have implemented Dr. Massironi's concept by jointly developing special sonic tips for the preparation of crowns.

In close cooperation with Prof. Günay of the Medical University of Hanover, we created the sonic tips SF8878K and SF8856 as well as special tips with working parts that are bisected lengthwise for both mesial and distal use. These tips ideally complement the set 4384A.

Medium grid:



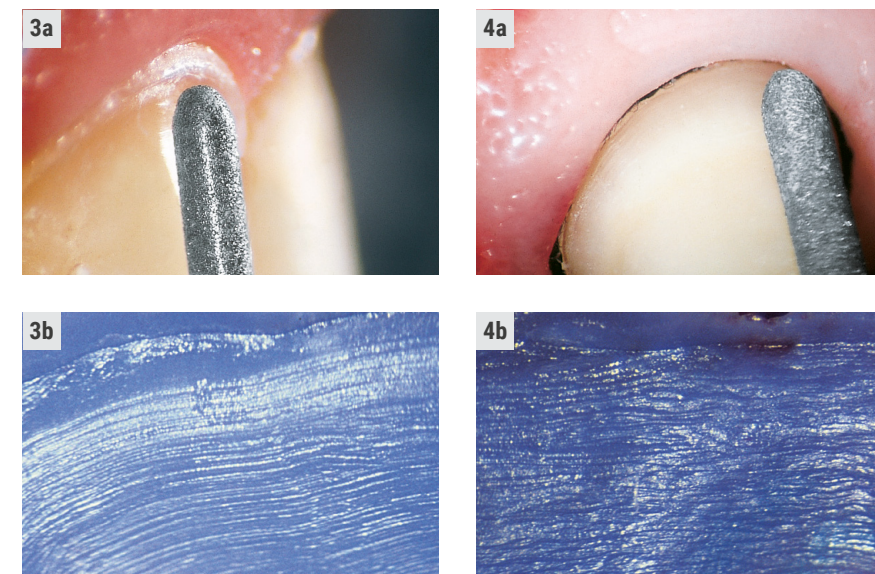
Fine grid:



Bisected lengthwise:



Scientific advice
Dr. Domenico Massironi, Milan/Italy
Prof. Günay, Medical University of Hanover/Germany



Indications:

- Exact positioning and finishing of the prosthetic margin [4a/b] after supragingival preparation with rotary instruments of identical shape [3a/b]
- Interproximal trimming by means of sonic tips bisected lengthwise (mesial or distal)

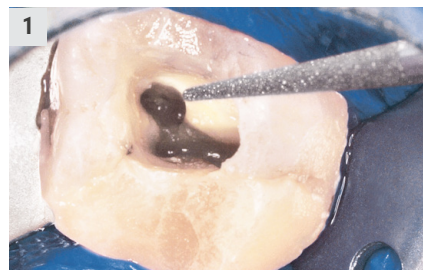
Advantages:

- The tips are gentle on the soft tissue, thus avoiding haemorrhages that might hamper impression taking
- The retraction cord is not pulled out
- The tips create very fine crown margins, which is an essential condition for well-fitting, durable restorations [1/2]
- Improved adhesion of the fixing cement thanks to the irregular structure of the crown core

Recommendations for use:

- First prepare tooth with rotary instruments of matching shape
- Start up sonic tip prior to application to the tooth, providing plenty of spray cooling
- Power setting ❶ in the Komet SF1LM/S: Positioning and finishing of the crown margin





Endodontics

Orthograde endodontics

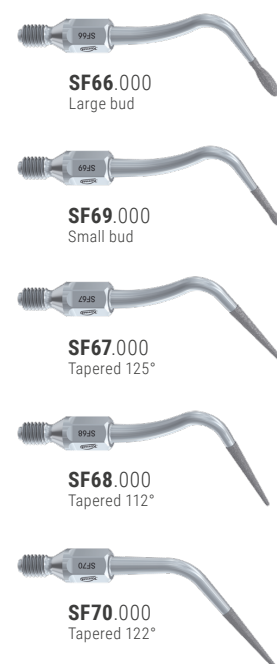
Indications:

Orthograde preparation of the pulp chamber and preparation of the cervical third of the root canal as part of an endodontic treatment.

- SF66: Initial preparation of the access cavity, removal of protruding material
- SF69: Finishing of the access cavity and minimal freshening of the dentin layer, removal of residues of root canal fillings
- SF67: Retrieval of fine and calcified canals, opening of the upper canal portions during revision. During preparations instead of Gates-Glidden burs [1]
- SF68: Alternative to the SF67 with a more pronounced angle
- SF70: Enlargement of long and wide canals, unblocking of fractured instruments, removal of root fillings made of gutta-percha and soft cements

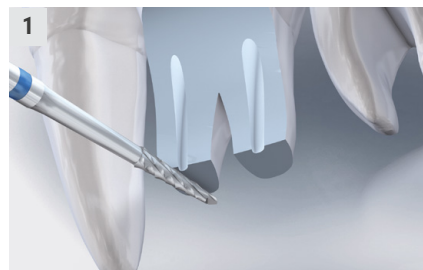
Advantages:

- Quick preparation and removal of old root fillings
- Easier retrieval of root canals
- Enlargement of obliterated canals
- Preparation of straight canal access cavities without weakening the crown
- Useful for removing hard root filling-material, cements or posts
- Controlled, gentle preparation without steps and protruding material
- Excellent vision



Recommendations for use:

- First prepare tooth with rotary instruments the usual way
- Start up sonic tip prior to application to the tooth, providing plenty of spray-cooling
- Power setting ❶ in the Komet SF1LM/S: Finishing of surfaces and fine trimming
- Power setting ❷ Removal of large amounts of substance



Endodontics

U Retrograde endodontics

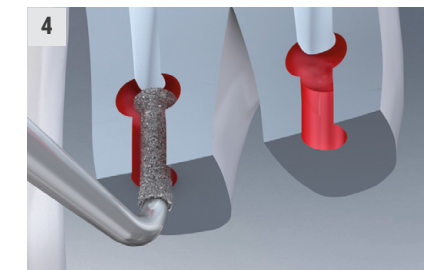
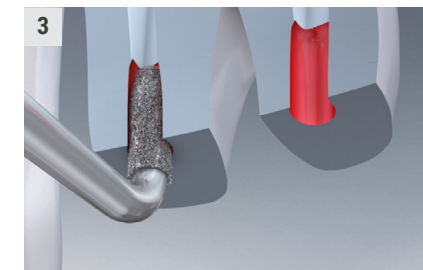
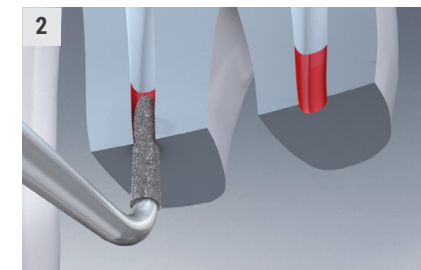
Indications:

Retrograde preparation of the root canal during apicectomies. After gaining access through the jaw bone, the preparation of a bone window and the resection of the root apex [1], the following sonic tips are used:

- SF56/SF57: Retrieval of the root canals from an apical direction [2].
- SF16/SF17: Preparation of the cavity up to a penetration depth of 3 mm [3].
- SF55: In case of extremely curved roots in the front region, it may be helpful to open and enlarge the canal with these specially shaped tips.
- SF20/SF21: Preparation of an undercut to ensure that the retrograde root filling is retained [4].

Advantages:

- Minimally invasive treatment without need to prepare a large bone window
- Axial work, even in very crowded conditions
- Easier work thanks to double-angled-tips
- Slender tips for excellent vision in all-jaw regions
- Simplified preparation of undercuts for permanent retention of the retrograde root filling



SF56.000
torpedo, curved to the left



SF57.000
torpedo, curved to the right



SF16.000
torpedo, curved to the left



SF17.000
torpedo, curved to the right



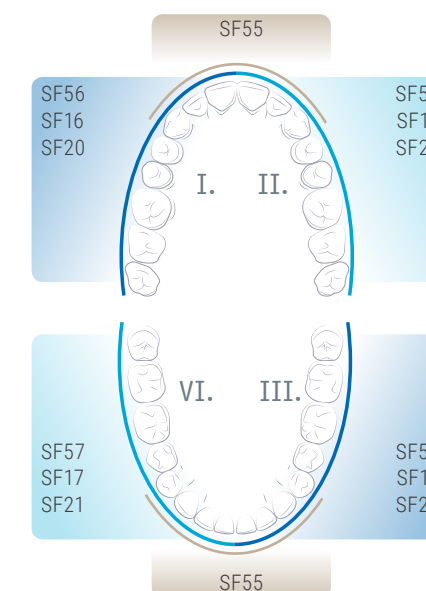
SF55.000
torpedo, extremely curved



SF20.000
t-shaped, curved to the left



SF21.000
t-shaped, curved to the right



Recommendations for use in the Komet SF1LM/S:

- Start up sonic tip prior to application to the tooth, providing plenty of sterile spray cooling
- External supply of a sterile cooling agent by means of the cooling adapter SF1979 (the water supply of the dental power unit must be turned off)
- Use power setting ❶ only

Surgery

Extremely fine bone cuts

Sonic tips for oral surgery,
developed by Dr. Ivo Agabiti

Indications:

Conservative work on bones as part of
surgical and implantological interventions.
Dr. Agabiti invented these tips with an
elongated yet slightly round outer contour
which is perfectly suited for this purpose.
The teeth of the saw are arranged in
spaces of 1 mm.

- Bone cuts [1a/b] [2a/b]
- Splitting of the alveolar crest [1a/b]
- Detaching a tooth from its alveolar
compartment and extraction [2a/b]
[3a/b]



SFS100.000
sagittal



SFS101.000
axial

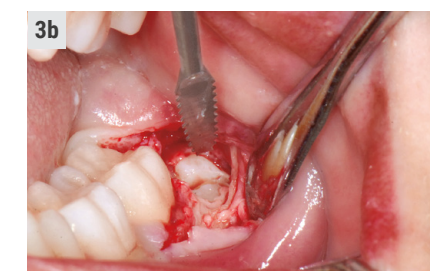
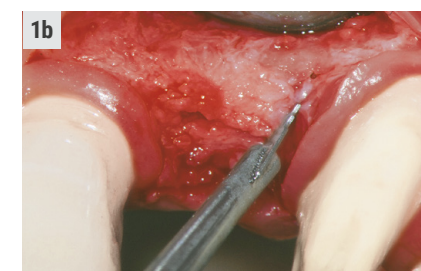
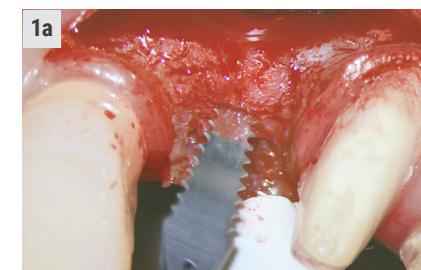


SFS102.000
straight

Note:
Cutting width 0.25 mm
Cutting depth 10.70 mm



Scientific advice
Dr. Ivo Agabiti, Pesaro/Italy
www.sonosurgery.it



Advantages:

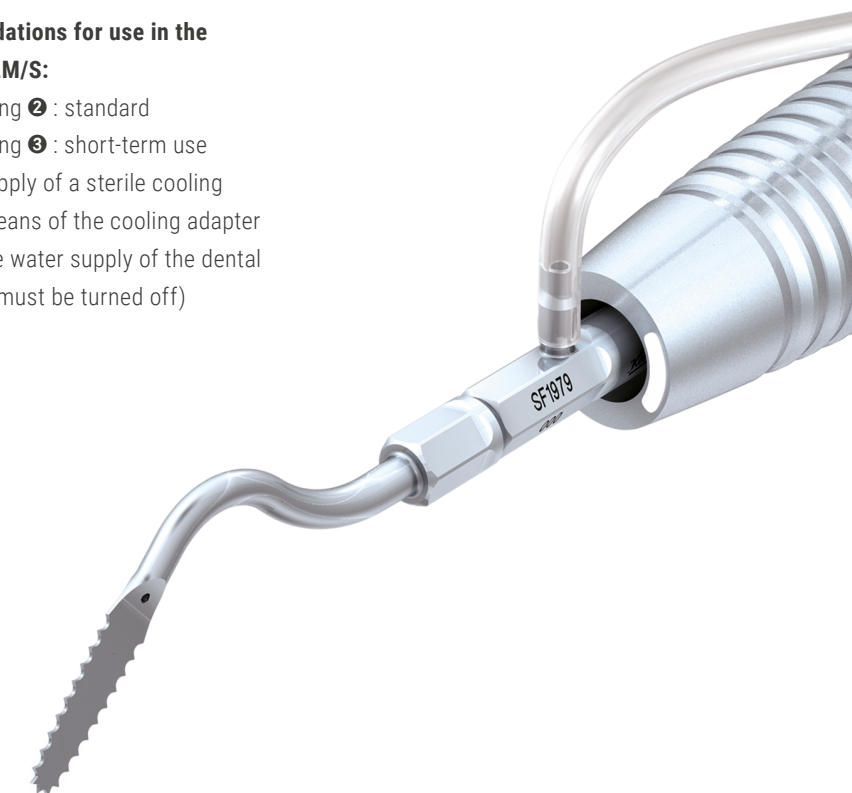
- Perfect shape
- Very fine incisions (0.25mm)
- Gentle on the soft tissue
- Easy handling
- Excellent vision
- Optimum control during operations

Recommendations for use in the Komet SF1LM/S:

- Power setting ② : standard
- Power setting ③ : short-term use
- External supply of a sterile cooling
agent by means of the cooling adapter
SF1979 (the water supply of the dental
power unit must be turned off)



4567A
Sonosurgery set
Can be sterilised at up to 135°C



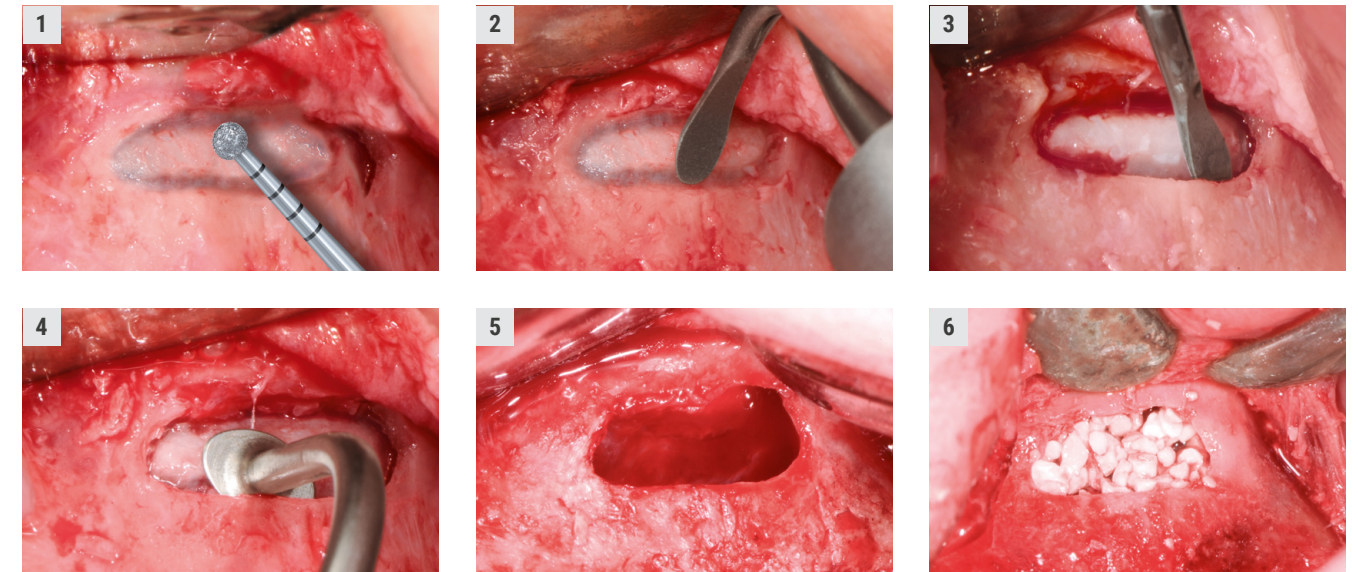
Lateral sinus lift

SFS109 | SFS103 - 105

Developed in cooperation with Dr. Ivo Agabiti, these sonic tips are designed for the minimally invasive mobilization of the periosteal membrane in the maxillary sinus as part of a sinus lift.

Indications:

- Gentle preparation of a lateral bone window
- Gentle separation of the sinus membrane in the region of the bone window
- Gentle elevation of the sinus membrane

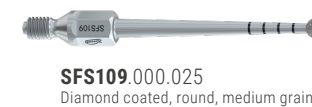


Advantages:

- The oscillating movements of these sonic tips allow a particularly gentle preparation of the bone window and displacement of the sinus membrane in the area of the previously mobilised lateral bone window
- The saucer shaped sonic tips SFS103 or SFS104 are particularly suited for an optimum elevation of the sinus membrane at the edges of the lateral window

Recommendations for use in the Komet SF1LM/S:

- Power setting ① : gentle
- Power setting ② : standard
- External supply of a sterile cooling agent by means of the cooling adapter SF1979 (the water supply of the dental power unit must be turned off)



SFS109.000.025
Diamond coated, round, medium grain



SFS109F.000.025
Diamond coated, round, fine grain



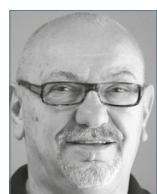
SFS103.000
Saucer Ø 2.5 mm, 75° angle



SFS104.000
Saucer Ø 2.5 mm, 35° angle



SFS105.000
Oval ("elephant foot"),
approx. 3.5 x 5.2 mm, 60° angle



Scientific advice
Dr. Ivo Agabiti, Pesaro/Italy
www.sonosurgery.it

Work on bones

SFS110

Diamond coated sonic tip for vertical incisions in the bone at the mesial and distal end during the widening of the alveolar ridge

Recommendations for use in the Komet SF1LM/S:

- Power setting ❶ : gentle
- Power setting ❷ : standard
- External supply of a sterile cooling agent by means of the cooling adapter SF1979 (the water supply of the dental power unit must be turned off)



Surgical crown lengthening

SFS120 - 122

Sonic tips for minimally invasive surgical crown lengthening without the creation of a flap, developed by Dr. Schwenk and Dr. Striegel, Nuremberg.



Indications:

- Minimally invasive surgical crown lengthening without creation of a flap, achieved by gently swivelling the sonic tip in mesial and distal direction in order to reconstitute the biological width in the following cases:
- Asymmetrical dental arcade [1]
- Gummy smile [2]
- Violation of the biological width [3]

Advantages:

- Surgical crown lengthening without the creation of a flap
- Reconstitution of the biological width without need for periodontal surgery [4]
- Thanks to their shape which resembles a flattened sphere, these tips are ideally suited for effective reduction of the bone
- Diamond coated on the outer edges only
- Excellent healing of the wound, almost trauma-free treatment
- Minimally invasive technique

Recommendations for use in the Komet SF1LM/S:

- Power setting ❶ : gentle
- Power setting ❷ : standard



Scientific advice:
Dr. Thomas Schwenk
Dr. Marcus Striegel



Sonic Hand Piece

SF1LM/S

Sonic hand piece by Komet

The air driven sonic hand piece (air scaler) SF1LM/S is extremely effective, yet very gentle. It is distinguished by its elliptical movements of 360°. What's more, the SF1LM/S has the following advantages:

- Fits all MULTIflex™ connections (SF1LM) and Sirona® connections (SF1LS)
- Optimum illumination of the operative site thanks to two focused
- Infinitely variable (3 settings)
Stufe ❶ = gentle
Stufe ❷ = standard
Stufe ❸ = short-term use only*
- Safety lock at setting 2
- Oscillating frequency of 6 kHz
- With spray cooling
- 2 years' manufacturer warranty

Important note:

Apply low contact pressure only; excessive contact pressure reduces the vibration of the sonic tip and consequently its effectiveness.

* This level is not authorised for all sonic tips.
For further information, please refer to the instructions for use of the tips.



Indikation/Indication	Power Level SF1LM/S		
	1	2	3
Scaler	●	●	●
Implantatprophylaxe/Implant prophylaxis	●	●	●
Paro/Perio*	●	●	●
Kronenpräp./Crown Prep, Stripping/Shaping	●	●	●
Bearbeitung von Approximalfächchen/ Work on interprox. surfaces (SFM/D6, SFM/D7)	●	●	●
Veneertechnik/Veneer Technique, Micro/Bevel	●	●	●
Fissurenbearbeitung/Opening of Fissures	●	●	●
Endo*	●	●	●
Chirurgie*/Surgery*	●	●	●

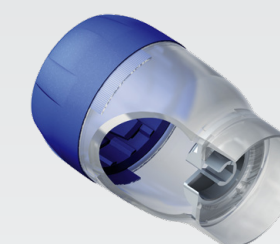
*Achtung: Bei vereinzelter Instrumenten dieser Indikation gibt es Einschränkungen der Leistungsstufen. Bitte die korrekte Leistungsstufe der Gebrauchsanweisung entnehmen.
*Caution: In some cases, the instruments intended for this indication cannot be used at all power settings. Please refer to the instructions for use for the correct setting.

Test card for prophylaxis and periodontal tips,
with a useful overview of the power settings on the reverse.

Accessories



9993L6
Sterilization container for 3 sonic tips
and 6 FG and RA instruments



SF1975
Tip changer with torque



9953
Silicone plug for 9952/9993L6

9952
Sterilisation container for 7
sonic tips (without instruments)



SF1978L
Rinse adapter for
sonic tips
(to be reprocessed in Miele
washers/disinfectors)



Accessories



Komet Dental

Gebr. Brasseler GmbH & Co. KG
Trophagener Weg 25 · 32657 Lemgo
Postfach 160, 32631 Lemgo · Germany
Telefon +49 (0) 5261 701-0
hello@kometdental.com
Contact for dealers:
export@kometdental.de

Verkauf Deutschland:

Telefon +49 (0) 5261 701-700
Telefax +49 (0) 5261 701-289
info@kometdental.de
www.kometdental.de

Export:

Telefon +49 (0) 5261 701-0
Telefax +49 (0) 5261 701-329
export@kometdental.de
www.kometdental.com

Komet Austria Handelsagentur GmbH

Hellbrunner Straße 15 · 5020 Salzburg
Telefon +43 (0) 662 829-434
Telefax +43 (0) 662 829-435
info@kometdental.at
www.kometdental.at

Komet France

18 rue · Fourcroy · 75017 Paris
Phone +33 (0) 1 43 48 89 90
info@komet.fr
www.komet.fr

Komet Italy

Via Gianbattista Morgagni 36,
37 135 Verona
Phone +39 (0) 45 11171911
info@komet.it
www.komet.it

Komet UK

Invoice an general correspondance:
27 Old Gloucester St,
Holborn, London WC1N 3AX
info@kometuk.com
www.kometuk.com