



Komet **ETNA.**

The premium line for all-ceramic materials.





Innovation in your hands.

First-class Tools for Excellent Results.

Monolithic restorations are essential in prosthetic dentistry and require precision and flexibility to achieve an optimal shape and surface quality.

Komet's new ETNA grinders and polishers meet the demands of modern all-ceramic materials with their durability, efficiency, and precision.

ETNA grinders ensure superior material removal. Thanks to their long service life and reduced heat generation, the ETNA Grinders ensures effortless preparation of the surfaces. The perfectly matching polishers with a softer material and a special diamond grit deliver a high-gloss finish in two steps.

Together, these high-quality instruments guarantee excellent results for all requirements in the field of ceramic restorations.



ETNA grinders.

The premium line of the DCB abrasives.

With a focus on durability, precision, and efficiency, ETNA grinders are characterized by a harder bond and high diamond grit concentration, improved stability of the edges, and outstanding substance removal. These tools prepare surfaces that can be polished straight away, thus eliminating the need for extra steps.

Facilitates your work.

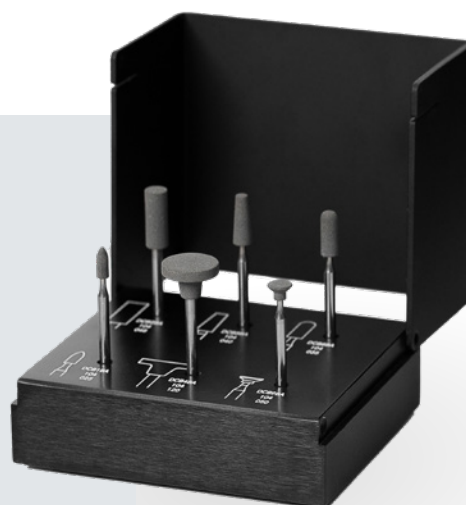
- Revolutionizes work on ceramics.
- Ideal for demanding tasks.
- Exceptionally long service life and high grinding efficiency.
- Effective and precise on all types of ceramic, including zirconium oxide.
- High concentration of diamond grains in a stable special bond.
- Excellent stability of the shape and edges.
- Fine surface finish - ideal for subsequent polishing.

The ETNA Grinder premium kit contains six different shapes. The grinders are securely placed in a laser-marked aluminium bur block of outstanding quality.

ETNA Grinders Kit (4698.000)

Content

DCB1BA.104.025	Flame
DCB2BA.104.048	Cylinder
DCB3BA.104.040	Tapered
DCB4BA.104.120	Wheel
DCB8BA.104.035	Cylinder with rounded edges
DCB9BA.104.050	Inverted cone



Overview ETNA grinders



ETNA Polishers.

The tool for a high-gloss finish.

ETNA polishers complement the grinders perfectly as they are made of a softer material and are provided with a special diamond grit that ensures a smooth, effortless workflow. The polishers not only create a high-gloss finish in just two steps, they also offer exceptional durability for an excellent performance over a long period of time. Their versatility allows both grinders and polishers to adapt seamlessly to all ceramic shapes and sizes, including zirconium oxide.

Unique product benefits

- Exceptionally long service life.
- Special diamond grit: Creates a polished, flawless surface with minimum pressure.
- Ideal for polishing the surfaces directly after preparation with the ETNA grinders.
- Two-step polishing process: Achieves a high-gloss finish with just two steps – faster results with less effort.
- Softer material provides an effortless, smooth working experience.
- Flexible application: Perfect for various ceramic shapes and sizes.
- Different shapes to match all ceramic restorations.

The ETNA Polisher premium set contains the most important shapes for pre-polishing and high-gloss finish.

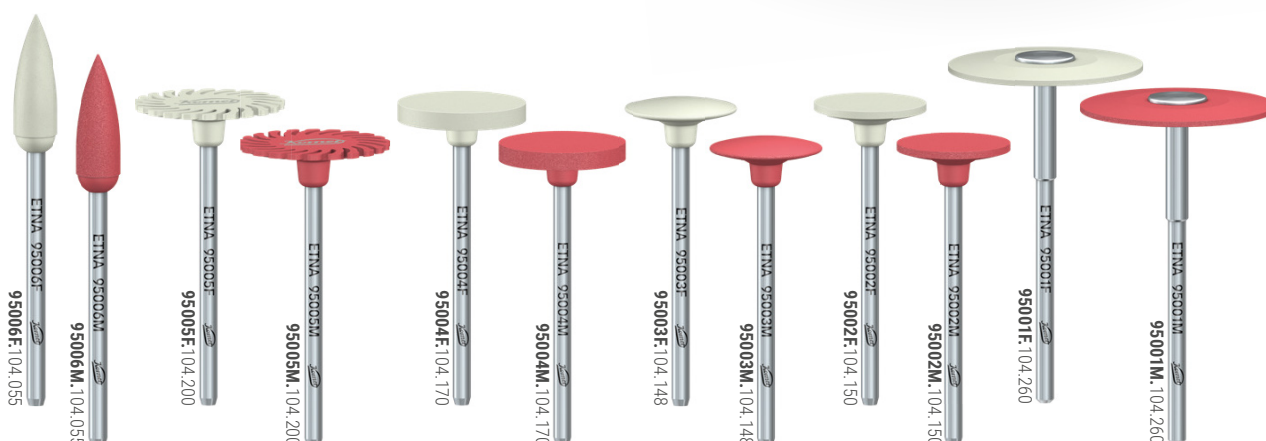
The polishers are securely placed in a laser-marked aluminium bur block of outstanding quality.

ETNA Polishers Kit (4699.000)

Content	
95001M.104.260	Lenticular, red
95001F.104.260	Lenticular, grey
95005M.104.200	Spiral, red
95005F.104.200	Spiral, grey
95006M.104.055	Flame, red
95006F.104.055	Flame, grey



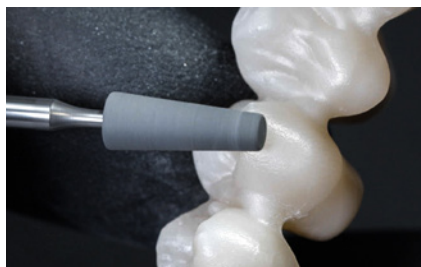
Overview ETNA polishers



Step by step to a high-gloss finish

Made by Komet Dental, ETNA is more than just a tool – it is a reliable partner you can count on every day. The grinders are provided with a powerful diamond grain structure and glide over any surface with precision, ensuring perfect contours even on the most sophisticated restorations. The polishers give your work a flawless high-gloss finish in just two steps – quickly, effortlessly, and perfectly. ETNA helps you meet your own quality standards every day.

Work on zirconium oxide after the sintering process



1. Protruding excess material is processed with the tapered DCB grinder at low speed and low pressure – ideal for delicate areas.



2. + 3. Whenever corrections have to be made, the innovative ETNA grinders provide ideal support. They remove imperfections with precision and sculpt anatomical details to perfection.



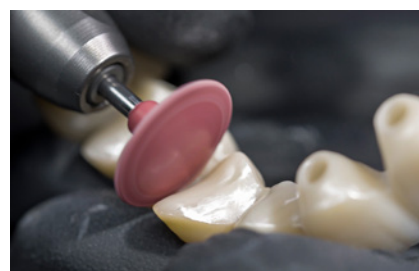
From polishing to a high-gloss finish



4. Pre-polishing of basal surfaces with the red spiral.



5. The flame-shaped polisher is used to perfectly smooth the surface.



6. ETNA polishers are also available in various lenticular shapes to reach even interdental areas optimally.



7. The gray polishers then ensure a high gloss finish.



8. The polishing spiral creates the aesthetic highlight in the final finish.



"Manufacturers like Komet are constantly improving their instruments to keep pace with the development of materials. We see this in the ETNA system; first the grinders, which have proven very effective in our laboratory, and now the matching polishers. This means we can guarantee consistently good results."

Certified Dental Technician Thomas Christou, B+D Zahntechnik GmbH, Petershagen



ETNA in the laboratory – the perfect choice!

Interview with Thomas Christou.

Mr. Christou, machining monolithic high-performance ceramics requires a systematic approach. How do you proceed?

In our laboratory, our protocol begins with rough machining after sintering. A common mistake is to use diamonds that are too coarse – this can cause deep scratch marks that are difficult to level out later. We prefer to work with finer tools right from the start. We start with the ETNA grinders that are provided with an optimized diamond bond to reduce heat generation to a minimum. This protects the material, produces a beautiful "smooth" surface, and ensures a homogeneous grinding pattern. And now that we have got the new ETNA polishers, the entire workflow has been coordinated and we have a clearly defined process. This gives us confidence in our daily work here at the lab and ensures consistently high quality.

Science recommends a multi-step approach when polishing monolithic restorations. How do you proceed?

With the ETNA polishers, we work in two stages: red for pre-polishing and gray for high-shine polishing. Thanks to the coordinated grain sizes, we achieve the same – in some cases even better – surface quality in two steps than previously in three or more steps. Another advantage is that the polishers are universally applicable, whether for zirconium oxide, lithium disilicate, or classic veneering ceramics. This not only simplifies everyday laboratory work but also makes a noticeable difference in chairside corrections. When we have to repolish ground pieces prepared at the dental practice, we don't need to use polishing paste. This simplifies the workflow considerably.

Process reliability is an important factor when working with zirconium oxide. What role does the service life of the instruments play in this?

Nothing is more annoying than an instrument that has seen better days after just two crowns. Frequent replacement not only costs time but also leads to fluctuations in the surface quality. We have had very good experiences with the ETNA grinders. The diamond bond ensures a long service life. We see the same principle with the new ETNA polishers – they wear much more slowly than conventional polishers. This makes itself felt from an economic point of view as well.

Komet Dental

Gebr. Brasseler GmbH & Co. KG
Trophagener Weg 25 · 32657 Lemgo
Postfach 160, 32631 Lemgo · Germany
Telefon +49 (0) 5261 701-0
hello@kometdental.com
Contact for dealers:
export@kometdental.de

Verkauf Deutschland:

Telefon +49 (0) 5261 701-700
Telefax +49 (0) 5261 701-289
info@kometdental.de
www.kometdental.de

Export:

Telefon +49 (0) 5261 701-0
Telefax +49 (0) 5261 701-329
export@kometdental.de
www.kometdental.com

Komet Austria Handelsagentur GmbH
Hellbrunner Straße 15 · 5020 Salzburg
Telefon +43 (0) 662 829-434
Telefax +43 (0) 662 829-435
info@kometdental.at
www.kometdental.at

Komet France

18 rue · Fourcroy · 75017 Paris
Phone +33 (0) 1 43 48 89 90
info@komet.fr
www.komet.fr

Komet Italy

Via Gianbattista Morgagni 36,
37135 Verona
Phone +39 (0) 45 11171911
info@komet.it
www.kometacademy.it

Komet UK Invoice and general
correspondance:
27 Old Gloucester St, Holborn,
London WC1N 3AX
info@kometuk.com
www.kometuk.com

Brasseler®, Komet®, Art2®, CeraBur®, CeraCut®,
CeraDrill®, CeraPost®, DC1®, DIAQ®, FastFile®, F360®,
F6 SkyTaper®, H4MC®, KometBioSeal®, OccluShaper®,
OptiPost®, PolyBur®, PrepMarker®, Procodile®, Procodile
Q® and SHAX® are registered trademarks of
Gebr. Brasseler GmbH & Co. KG.

ReFlex® und EndoPilot® are registered trademarks
of Schlumbohm GmbH & Co. KG

Some of the products and designations mentioned in
the text are trademarked, patented or copyrighted.
The absence of a special reference or the sign ®
should not be interpreted as the absence of legal
protection.

This publication is copyrighted. All rights, also with regard
to translation, reprint and reproduction (also in the form of
extracts) are reserved. No part of this publication may be
reproduced or reprocessed using electronic systems in any
form or by any means (photocopying, microfilm or other
methods) without the written permission of the editor.

Colours and products are subject to alterations.
Printing errors excepted.

As at September 2025