



Preparation of crown cores | **Sonic tips**



Exact positioning and finishing of crown margins with sonic tips.

In crown restorations, an exact marginal seal is of the utmost importance for the long-term success of a preparation and a clinically perfect result. A combination of rotary instruments for the preparation of crown cores and congruent sonic tips is predestined for this indication. In close collaboration with a renowned specialist from Milan, Dr. Domenico Massironi, who kindly provided his expert advice, Komet® have developed sonic tips especially designed for this area of application.

The dentist can choose from various shapes (see reverse). In order to for example prepare a shoulder to receive an all-ceramic restoration, a supra-gingival preparation is carried out with a rotary instrument (S6847KR.314.016).

This is followed by the exact positioning of the preparation limit for the prosthetic marginal seal by means of the sonic tip SF847KR.000.016. The final finishing is carried out with the same sonic tip at minimum setting.

When used in combination with the Komet® Sonic hand piece SF1LM, the sonic tips do not only achieve excellent finished results, they also leave the gums completely unharmed, even if direct contact occurs. A sonically placed and finished crown margin is the best precondition for an exact impression and the successful creation of a durable restoration.

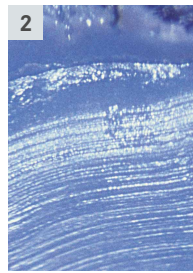
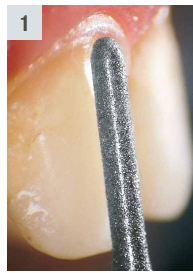
Advantages over rotary operation:

- Gentle on the soft tissue, to avoid bleeding which might impair impression taking
- No risk of the retraction cord getting pulled out accidentally
- Creates very fine crown margins which are an essential condition for well-fitting, durable restorations
- The irregular structure of the core improves the adhesion of the fixation cement

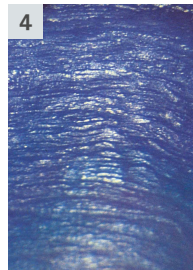
Hint: New sonic tips for interproximal positioning and finishing (SF8878KM/KD.000.018) are also available.

Application:

1. – 2. Supra-gingival preparation with a rotary instrument. The replica of the core – obtained by impression taking – shows parallel grooves created by the rotary preparation.



3. – 4. Exact positioning of the preparation limit by means of the congruent sonic instrument. The corresponding replica displays an irregular surface structure, which favours the perfect impregnation and adhesion of the fixation cement.



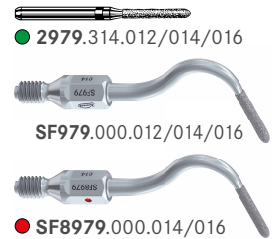
5. The finished preparation shows no damage to the soft tissue.



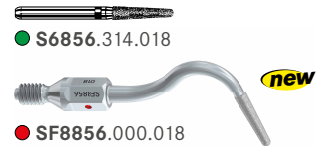
6. Ceramic crown in place.

Best synergy effects are achieved by using a combination of sonic and rotary instruments:

Ellipse:



Tapered round:



Tapered, rounded edge:



Flame:



Tapered torpedo:



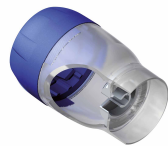
Bisected lengthwise:



Recommendations for use:

For use in the Komet sonic hand piece SF1LM:

- The operating frequency is $6 \pm 0,5$ kHz, the oscillating range is 0.10 – 0.15 mm.
- Positioning and finishing of the crown margin take place at setting 1.
- Always supply sufficient spray cooling (at least 30 – 60 ml when working with sonic instruments).



SF1975
Tip changer for the Komet SF1LM hand piece for assembling/disassembling Komet sonic tips.



9981
4-hole Lux connection

The tips can also be used in the following hand pieces:

- In the SONICflex® hand piece made by KaVo (Series 2000N/L/X/LX or series 2003N/L/X/LX).
- In the scalers made by the co. W&H (Series Proxeo® ZA-55/L/LM/M/LS and ST ZE-55RM/BC, series Synea® ZA-55/L/LM/M or series Alegra® ST ZE-55RM/BC).
- In the SIROAIR L of the co. Sirona®.



SF1LM
Komet sonic hand pieces for the MULTIflex® connection, comes with a tip exchanger for W&H tips.



SF1978
Rinse adapter for reprocessing Komet sonic tips in Miele washers/disinfectors.

Synea®, Alegra® und Proxeo® are registered trademarks of the co. W&H, Germany. SONICflex® and MULTIflex® are registered trademarks of the co. KaVo, Germany.

