



Sonic Tips | SFS90M/D



Space enlarging tips for extractions.

Komet® developed the sonic tips SFS90M (mesial) and SFS90D (distal) in close cooperation with Dr. Roberto Barone and Dr. Carlo Clauser, Florence/Italy. These new tips are used in cases where a tooth root has to be extracted, but there is not enough space for placing an elevator between the root and the alveolus. This is exactly where these sonic tips come in. They facilitate the mechanical procedures during extraction and are particularly suitable for roots in the vicinity of a nerve or soft tissues.

These sonic tips are equally suited for the surgical extraction of impacted third molars in the lower jaw, after fragmentation of the tooth and removal of the crown. They can be used instead of the fine, long rotary instruments that are traditionally used for work on deep-seated roots.

The oscillating, sonic-powered mechanical movements of the tips provide effective support the user. They allow almost effortless work under excellent control and provide perfect vision.

Conclusion: The sonic tips SFS90M and SFS90D are ideally suited for creating space during the extraction of a tooth.

Range of application:

- Creation of space between the tooth root and the alveolar bone, in order to facilitate the use of an elevator.
- Particularly suitable for the extraction of impacted wisdom teeth whose roots are often in contact with the inferior alveolar nerve.
- Facilitation of all mechanical procedures during the extraction of teeth.

Advantages over rotary instruments:

- Better control
- Better vision
- Less invasiveness

Clinical sequence:

1. Partially impacted tooth 38 due to be extracted. The close-up view reveals angled and convergent roots that cross the alveolar canal, posing an increased risk of neurological damage.

2. Creation of a triangular, vestibular flap. The crown of tooth 38 is adjacent to the distal surface of tooth 37.

3. After the removal of the crown, the root canal entrances and the bifurcation are exposed.

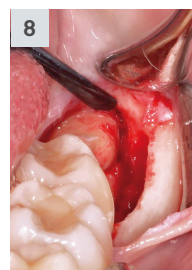
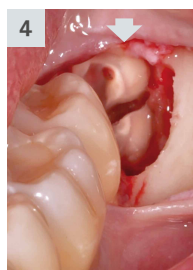
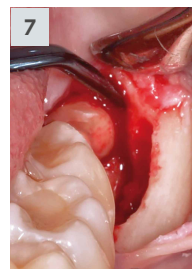
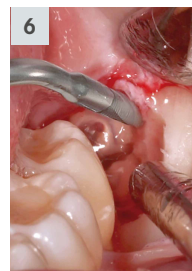
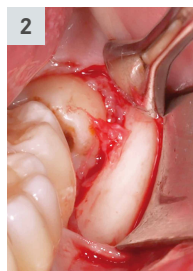
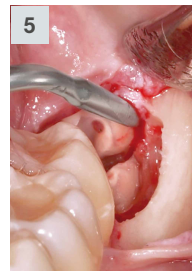
4. The root has been separated. There is not sufficient space to insert an elevator behind the distal root.

5. In this case, the sonic tip SFS90D (distal) allows the safe creation of adequate space. A fine, precise incision along the contour of the root can be achieved with this instrument. Thanks to its long shank, the tip allows an unobstructed view of the site.

6. The sonic tips penetrate deeper in a very slow motion, which allows perfect control of the movements performed by the tip. The risk of damaging the bone or the nerve can therefore be reduced to a minimum.

7. After that, the tip of a slim elevator can be inserted between the root and the alveolar bone.

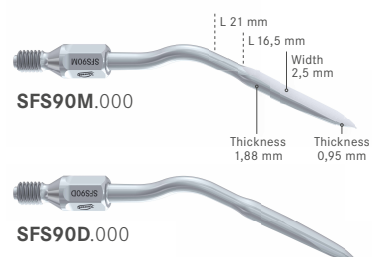
8. The slim elevator works in the space between the root and the alveolar bone.



Recommendations for use:

- The sonic tips are intended for use in the sonic hand pieces Komet SF1LM and KaVo SONICflex series 2003N/L/X/LX.
- Set the hand pieces to power levels 1 – 3.
- A sterile cooling agent has to be supplied from an external source (the water supply of the dental unit has to be turned off).
- The sonic tips are at their most effective when used with low contact pressure.
- Do not use the instrument for leverage
- Use an anti-corrosive detergent and disinfectant (e.g. Komet DC1®) for reprocessing.

SONICflex® is a registered trademark of the company KaVo, Germany.



Scientific advice:

Dr. Roberto Barone,
Dr. Carlo Clauser,
Florenz (Italien)
www.dentidelgiudizio.com