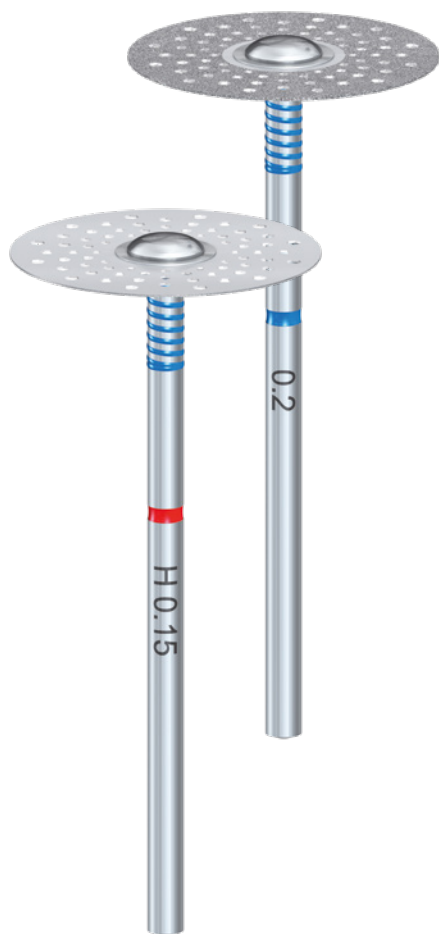




Kit 4671 | DISCtance™ IPR System



Rotary diamond discs for interproximal enamel reduction in orthodontic treatment.

An indispensable component of successful corrective orthodontic treatment, interproximal enamel reduction (also called "stripping") has a range of indications. These include correcting disproportionate tooth sizes in the lower versus the upper jaw, eliminating crowding, and increasing the stability of orthodontic treatment results by creating full-surface contact, especially in lower anteriors.

A viable alternative to tooth extraction, interproximal enamel reduction is particularly suitable for adult patients preparing to receive braces fixed at the buccal or lingual side of the tooth or prior to treatment with dental aligners. The Komet® DISCtance™ IPR system features a range of new, sharp-stripping discs that ensure the amount of substance is easily, efficiently, and precisely removed (usually 0.15 / 0.2 / 0.3 mm).

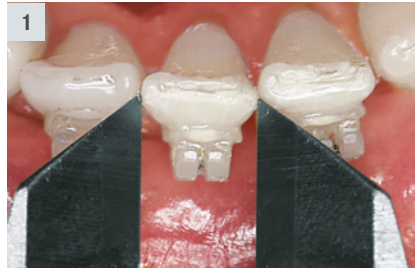
The discs are designed with fine or medium grit coating for the optimal substance removal and surface quality ratio.

Advantages:

- Five discs with thicknesses 0.15 mm, 0.20 mm, or 0.30 mm to be used sequentially or individually are engineered to mirror frequently in-demand specifications in popular aligner systems
- Disc grits are designed based on the optimal ratio of coarseness needed for efficient substance removal and highest resultant surface quality, reducing the risk of iatrogenic plaque accumulation
- Diamond disc coating varies from disc to disc, ensuring versatility for simplified precision in enamel reduction
- Disc rigidity is balanced between flexible and stiff for optimal operator control
- Color coded, laser-marked shanks allow easy identification

Step-by-step instructions:

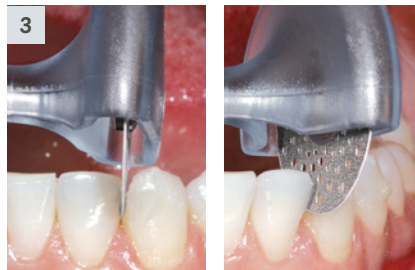
1. To avoid removing excessive amounts of enamel, measure the width of the tooth with a sliding calliper prior to the treatment and during enamel reduction. Alternatively, use a thickness gauge to measure the substance to be removed.



2. Open narrow interdental contact points with a diamond strip to avoid jamming of the rotary diamond discs.



3. Use diamond discs with increasing thickness until the required amount of enamel has been removed. Apply the discs at the occlusal end of the tooth and move them to the cervical area. Cool the area with water during use and work with a disc guard. The teeth to be treated should be aligned.



4. After completing the IPR (Interproximal Reduction), use a thickness gauge to control the amount of substance removed.



For contouring interproximal and incisal edges, we recommend using the 8392.314.016 diamond instrument or diamond strips. From a clinical point of view, the treatment should be finished with a final polishing step and fluoridation of the affected surfaces to prevent decay.

Recommendations for use:

The stripping disc is intended for use in a handpiece designed for long, straight shanks.

- Optimum speed: 5,000 rpm
- Apply the stripping disc at the occlusal or vestibular end of the tooth. Guide through the contact point in a slow, continuous movement. Start with a disc of 0.15 mm and follow with discs in ascending order of thickness (0.15 / 0.2 / 0.3 mm) until the required amount of substance has been removed.
- Cool the site with sufficient water spray and work with a disc guard.
- We recommend using standard polishing discs for subsequent polishing of the interproximal enamel.



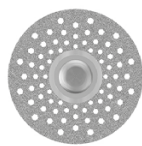
● **RS 15FV.104.200**
Thickness: 0.15 mm, coated on the upper side



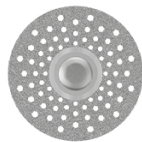
● **RS 15FH.104.200**
Thickness: 0.15 mm, coated on the lower side



● **RS 15F.104.200**
Thickness: 0.15 mm, coated on both sides



● **RS 20M.104.200**
Thickness: 0.20 mm, coated on both sides



● **RS 30M.104.200**
Thickness: 0.30 mm, coated on both sides



Kit 4671
DISCtance™ IPR System